



**2020 HOT
PRODUCTS**



**WE
SWITCHED
IT UP**

INTRODUCING THE FLEX PLATFORM WITH HIGH AND LOW SWITCHES



TLR-RM 1: 69440



TLR-RM 2: 69450

TLR™ RM 1 // TLR™ RM 2 COMPACT RAIL MOUNTED TACTICAL LIGHTING SYSTEM

69440 TLR RM 1 with Remote Pressure Switch Kit, Key Kit, one CR123A lithium battery

69441 TLR RM 1 Light Only with Key Kit, one CR123A lithium battery

- 500 lumens; 140m beam; runs 1.5 hours; 3 hours on strobe
- Powered by one CR123A lithium battery (included)
- 3.20" (8.12 cm); 2.74 oz. (77.9 g)

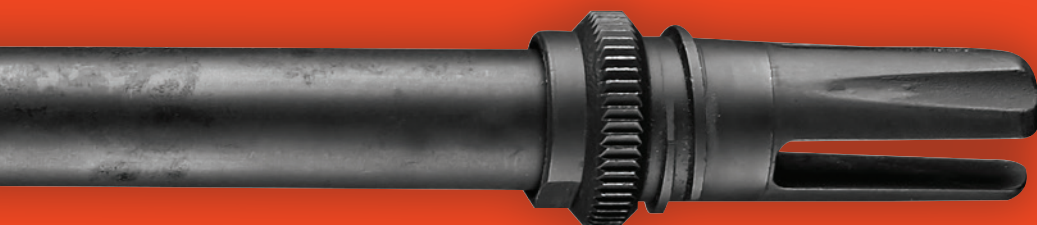
69450 TLR RM 2 with Remote Pressure Switch Kit, Key Kit, two CR123A lithium batteries

69451 TLR RM 2 Light Only with Key Kit, two CR123A lithium batteries

- 1,000 lumens; 200m beam; runs 1.5 hours; 3 hours on strobe
- Powered by two CR123A lithium batteries (included)
- 4.55" (11.55 cm); 4.55 oz. (129.0 g)
- Features two independent switches in one:
 - Multi-function, push button tail switch
 - Remote pressure switch; exits at 90° providing improved wire routing option while preserving rail space
- Safe off feature prevents accidental activation; saves batteries
- Engineered optic produces a concentrated beam with optimum peripheral illumination
- Securely attach/detach from any long gun with a Picatinny (MIL Standard 1913 Rail)
- IPX7; waterproof to 1 meter for 30 minutes



HOT PRODUCTS 2020



TLR-9™ RAIL MOUNTED TACTICAL LIGHT W/REAR SWITCH OPTIONS

69464 TLR-9 Flex - High Switch mounted on light plus Low Switch included

- 1,000 lumens; 200m beam; runs 1.5 hours
- Engineered optic produces a concentrated beam with optimum peripheral illumination
- Ambidextrous on/off switch with momentary or constant on operation
- User enabled strobe function
- Powered by two CR123A lithium batteries (included)
- Safe off feature prevents accidental activation; saves batteries
- Rail clamp system securely attaches/detaches quickly and safely with no tools and without putting your hands in front of muzzle
 - Securely fits a broad range of full frame weapons
- Durable, machined aircraft aluminum with black anodized finish
- IPX7; waterproof to 1m for 30 minutes
- 3.87" (9.82 cm); 4.26 oz (120.9 g)



HIGH SWITCH
For those who prefer
a "Higher Grip Style"

LOW SWITCH
For those who prefer
a "Lower Grip Style"



TLR-7® A

LOW-PROFILE, RAIL-MOUNTED TACTICAL LIGHT W/REAR SWITCH OPTIONS

69424 TLR-7A Flex - High Switch mounted on light plus Low Switch included

- 500 lumens; 140m beam; runs 1.5 hours
- Engineered optic produces a concentrated beam with optimum peripheral illumination
- Ambidextrous on/off rear switch in either a LOW or HIGH option*
- Uses one CR123A lithium battery (included)
- Safe off feature prevents accidental activation; saves batteries
- Rail clamp system securely attaches/detaches quickly and safely with no tools and without putting your hands in front of muzzle
 - Securely fits a broad range of full-sized and compact guns
- Durable, anodized machined aluminum construction
- User enabled strobe function
- 2.58" (6.55 cm); 2.4 oz (68.1g)
- IPX7; waterproof to 1m for 30 minutes



HIGH SWITCH
For those who prefer
a "Higher Grip Style"



LOW SWITCH
For those who prefer
a "Lower Grip Style"

HIGH SWITCH

For those who prefer
a "Higher Grip Style"



LOW SWITCH

For those who prefer
a "Lower Grip Style"



TLR-8® A

LOW-PROFILE, RAIL-MOUNTED TACTICAL LIGHT W/RED LASER AND REAR SWITCH OPTIONS

69414 TLR-8A Flex - High Switch mounted on light plus Low Switch included

- Features white LED and red laser
- 500 lumens; 140m beam; runs 1.5 hours (light only or light/laser combo)
 - 640-660nm red laser: Laser runs 60 hours
- Ambidextrous on/off rear switch in either a LOW or HIGH option*
- Uses one CR123A lithium battery (included)
- Safe off feature on bezel prevents accidental activation; saves batteries
- Rail clamp system securely attaches/detaches quickly and safely with no tools and without putting your hands in front of muzzle
- Securely fits a broad range of full-sized and compact guns
- Durable, anodized machined aluminum construction
- User enabled strobe function
- 2.58" (6.55 cm); 2.64 oz. (75g)
- IPX4 water-resistant

TLR-8® A G

LOW-PROFILE, RAIL-MOUNTED TACTICAL LIGHT W/GREEN LASER AND REAR SWITCH OPTIONS

69434 TLR-8A G Flex - High Switch mounted on light plus Low Switch included

- Features white LED and green laser
- 500 lumens; 140m beam; runs 1.5 hours (light only or light/laser combo)
 - 510-520nm green laser: Laser runs 11 hours
- Ambidextrous on/off rear switch in either a LOW or HIGH option*
- Uses one CR123A lithium battery (included)
- Safe off feature on bezel prevents accidental activation; saves batteries
- Rail clamp system securely attaches/detaches quickly and safely with no tools and without putting your hands in front of muzzle
- Securely fits a broad range of full-sized and compact guns
- Durable, anodized machined aluminum construction
- User enabled strobe function
- 2.58" (6.55 cm); 2.64 oz. (75g)
- IPX4 water-resistant



HIGH SWITCH
For those who prefer
a "Higher Grip Style"



LOW SWITCH
For those who prefer
a "Lower Grip Style"

TLR-1 HL®, TLR-2 HL®, TLR-2 HL® G

HIGH LUMEN WEAPON MOUNTED TACTICAL LIGHT (MODELS AVAILABLE W/ RED OR GREEN LASER)

- 69260** **UPGRADED** TLR-1 HL with Rail Locating Keys and lithium batteries - Black
- 69264** **UPGRADED** TLR-1 HL - Earless with Rail Locating Keys and lithium batteries - Black
- 69266** **UPGRADED** TLR-1 HL with Rail Locating Keys and lithium batteries - Flat Dark Earth
- 69267** **UPGRADED** TLR-1 HL with Rail Locating Keys and lithium batteries - Flat Dark Earth Brown
- 69262** **UPGRADED** TLR-1 HL Long Gun Kit with Safe off remote door switch, remote pressure switch, thumbscrew and lithium batteries - Black
- 69888** **UPGRADED** TLR-1 HL Long Gun Kit with Safe off remote door switch, remote pressure switch, mounting clips, standard door switch, lithium batteries - Flat Dark Earth with White LED
- 69261** **UPGRADED** TLR-2 HL with Rail Locating Keys and lithium batteries
- 69265** **UPGRADED** TLR-2 HL G with Rail Locating Keys and lithium batteries

- Now 1,000 lumens; 283m beam
- TLR-1 HL: Runs 1.5 hours
- TLR-2 HL: Runs 1.5 hours (LED/Laser); runs 45 hours (laser only); 640-660 nm red laser
- TLR-2 HL G: Runs 1.5 hours (LED/Laser); runs 17 hours (laser only); 510-530 nm green laser
- Momentary/steady On-Off
- User enabled strobe function
- Engineered optic produces a concentrated beam with optimum peripheral illumination
- Securely fits a broad range of weapons
- Mounts directly to all MIL-STD-1913 (Picatinny) rails and weapons with Glock-style rails
- Rail clamp system securely attaches/detaches quickly and safely with no tools and without putting your hands in front of muzzle
- Powered by two CR123A lithium batteries (included)
- TLR-1 HL: IPX7; waterproof to 1m for 30 minutes; 3.39" (8.61 cm); 4.32 oz (122.5 g)
- TLR-2 HL & TLR-2 HL G: IPX4; 3.39" (8.61 cm); 4.88 oz (138.4 g)



TLR-1 HL® DUAL REMOTE SWITCH KIT

69889 TLR-1 HL® Dual Remote Switch Kit - includes TLR-1 HL with Safe Off Tail switch, lithium batteries, Dual Remote Pressure Switch, Mounting Clips, Adhesive pads, and Cable Ties

- Allows for simultaneous or individual activation of the Streamlight TLR-1 HL and accompanying external aiming device
- Pressure switches permit momentary or constant on activation
- Mounts directly to all MIL-STD-1913 (Picatinny) rails



Shown with standard switch backplate.

Shown with "Safe Off" remote switch backplate.

TLR™ DUAL REMOTE SWITCH ACCESSORY

69138 TLR Dual Remote Switch - includes Dual Remote Pressure Switch, Mounting Clips, Adhesive pad, and Cable Ties

- Accessory switch allows for simultaneous or individual activation of the Streamlight TLR-1 & 2 Series weapon lights (sold separately) and accompanying external aiming device



TLR-1 HPL®

HIGH LUMEN, LONG-RANGE RAIL-MOUNTED TACTICAL LIGHT

- 69215** **UPGRADED** TLR-1 HPL w/Standard Switch, Rail Keys, and lithium batteries
- 69216** **UPGRADED** TLR-1 HPL w/Remote Switch, Rail Keys, and lithium batteries
- 69219** **UPGRADED** TLR-1 HPL w/Long Gun Kit, Rail Keys, and lithium batteries

- Now 1,000 lumens; 60,000 candela; 490m beam; runs 1.5 hours
- Momentary/steady On-Off
- Standard Switch: Ambidextrous switch
- Remote Switch: Port plug for remote switch assembly
- User enabled strobe function
- Deep dish parabolic reflector produces long-range targeting beam with a larger hotspot and brighter peripheral illumination
- Securely fits a broad range of weapons
- Mounts directly to all MIL-STD-1913 (Picatinny) rails and weapons with Glock-style rails
- Rail clamp system securely attaches/detaches quickly and safely with no tools and without putting your hands in front of muzzle
- Powered by two CR123A lithium batteries (included)
- IPX7; waterproof to 1m for 30 minutes
- Standard switch: 4.83" (12.27 cm); 5.6 oz (158.8g) with batteries
- Remote switch: 5.25" (13.34 cm); 5.9 oz (167.3g) with batteries



MAKE THE BRIGHTEST TACTICAL DECISION

THE EXPANDED TL-RACKER® FAMILY



MOSSBERG 500®/590®



REMINGTON 870™



NEW 590® SHOCKWAVE MODEL

TL-RACKER® INTEGRATED SHOTGUN FOREND LIGHT

- 69600** **UPGRADED** TL-Racker - Mossberg 500/590 with two CR123A lithium batteries
- 69601** **UPGRADED** TL-Racker - Remington 870 with two CR123A lithium batteries
- 69610** TL-Racker - Mossberg with two CR123A lithium batteries - Orange
- 69611** TL-Racker - Remington 870 with two CR123A lithium batteries - Orange
- 69602** TL-Racker - Mossberg Shockwave with two CR123A lithium batteries

- White LED produces 1,000 lumens; 283m beam; runs 1.5 hours
- Engineered optic produces a concentrated beam
- Elongated switch pad accommodates virtually any hand size
- Ambidextrous switch with momentary and constant on functionality
- Models available for Mossberg 500®/590®/590® Shockwave and Remington 870™
- Models available in Orange for Less-Lethal applications
- Ergonomic design provides maximum grip and easy switch access
- "Super tough" impact-resistant nylon body; virtually indestructible
- Powered by two CR123A lithium batteries (included)
- IPX7; waterproof to 1m for 30 minutes
- 8" [20.32 cm]; 12.1 oz. [343 g]

590® Shockwave Model



SIDEWINDER BOOT® **HANDS FREE RIGHT ANGLE LIGHT**

14975 Sidewinder Boot with two AA alkaline batteries

- Features white LED with high and low modes:
 - High: 55 lumens; 63m beam; runs 8 hours
 - Low: 7 lumens; 24m beam; runs 90 hours
- Integrated slide-in-place red filter
- Uses two AA alkaline batteries
 - Also accepts two AA lithium batteries for extended operation in extreme temperature environments (-40F to 150F)
- Tactile battery polarity indication on body facilitates battery replacement in the dark
 - Battery compartment cap hinged to prevent loss
- Multi-function push-button power switch
- Cord attachment holes provided in battery compartment cover capable of supporting 25 lb (11kg) of load
- Durable, high-impact, super-tough polymer body
- Spring steel clip fits to molle or helmet mounts
- IPX7; waterproof to 1m for 30 minutes
- Length: 1.86" [4.72 cm]; 3.52 oz. [100g] with alkaline batteries (included with purchase); 2.88 oz. [82g] with lithium batteries



Metal sleeve protects charge port; slide sleeve forward to reveal charge port



MACROSTREAM® USB **RECHARGEABLE COMPACT FLASHLIGHT**

66320 MacroStream USB with wrist lanyard, hat clip, & USB cord

- High and low modes:
 - High: 500 lumens; 90m beam; runs 2 hours
 - Low: 50 lumens; 30m beam; runs 8 hours
- Lithium ion battery charges in-product in 4 hours
- Multi-function push-button tail switch with charge indicator:
 - Red - Charging
 - Green - Charged
- Metal sleeve protects charge port; slide sleeve forward to reveal charge port
- Removable pocket clip also clips onto brim of hat for hands free use
- Includes USB cord and high-strength lanyard
- Compact design fits in the palm of your hand, comfortably fits in your pocket
- Durable, anodized machined aluminum construction; scratch-resistant polycarbonate lens
- IPX4 water-resistant; 1m impact resistance tested
- 4.50" [114.3 mm]; 2.20 oz [62.4 g]

WAYPOINT® 300

RECHARGEABLE HIGH PERFORMANCE PISTOL-GRIP SPOTLIGHT

44910 Waypoint 300 - 120V - Yellow

44911 Waypoint 300 - 120V - Black

44920 Waypoint 300 - International AC - Yellow

44921 Waypoint 300 - International AC- Black

- Pistol-grip spotlight with 3 modes:
 - High: 1,000 lumens; 270,000 candela; 1,039m beam distance; runs 3.75 hours
 - Medium: 550 lumens; 135,000 candela; 735m beam distance; runs 7.5 hours
 - Low: 35 lumens; 10,000 candela; 200m beam distance; runs 87 hours
- Weight balanced design and cushioned grip handle for a comfortable hold
- Trigger-style switch for easy momentary and constant on operation; secondary rotary switch selects High, Medium or Low mode
- Powered by rechargeable lithium ion battery; fully recharges in 4 hours
- Charge indicator LED:
 - Red - Charging
 - Green - Charged
- High-impact polycarbonate housing; rubberized lens ring
- Includes high-strength adjustable lanyard integrated stand for scene lighting
- IPX8 waterproof to 2m; it floats; 1m impact-resistance tested
- 6.75" (17.15 cm) x 7.14" (18.14 cm); 1.52 lb (691 g)



Use a single unit
or stack for
multi-level lighting



PORTABLE SCENE LIGHT II

RECHARGEABLE HIGH LUMEN SCENE LIGHT

46000 Portable Scene Light II - 120V AC/DC

46001 Portable Scene Light II - 230V AC/DC

46002 Portable Scene Light II - 240V AC/DC

46003 Portable Scene Light II - 100V AC/DC

46004 Portable Scene Light II - 240V [AUS/NZ] AC/12V

- Produces a high lumen flood pattern
- Five intensity levels correspond to desired run time
 - 100%: 10,000 lumens; runs 2 hours
 - 80%: 8,300 lumens; runs 2.75 hours
 - 60%: 6,300 lumens; runs 3.75 hours
 - 40%: 4,500 lumens; runs 5.75 hours
 - 20%: 2,300 lumens; runs 11 hours
- Multi-level illumination for scene lighting; head swivels 360° to aim the beam where you need it
 - Stackable for "light tower" capability
- Lithium ion batteries charge in 6 hours
 - Batteries will continue to charge while in use when plugged in; runs indefinitely using AC or DC power cord
- IPX7; waterproof to 1m for 30 minutes
- High-impact, thermoplastic housing mounted in a virtually indestructible alloy steel frame
- Hooked feet for hanging over doors, guard rails, fences, etc.
- Compact size (16" x 11" x 12" in; 40.6x28.9x30.5 cm); 15.38 lbs. (6.1 kg)

STYLUS PRO® USB RECHARGEABLE PENLIGHT

66133 **UPGRADED** Stylus Pro USB with 120V AC, USB cord, nylon holster. Black with white LED

66134 **UPGRADED** Stylus Pro USB with USB cord, nylon holster. Black with white LED

- USB rechargeable, sliding metal sleeve protects USB port
- Stylus Pro USB: Features upgraded white LED with high and low modes:
 - High: now 350 lumens; 109m beam; runs 1.5 hours
 - Low: 90 lumens; 58m beam; runs 3.5 hours
- Slimmer matte black body with forward sliding sleeve that protects USB port
- Rechargeable lithium ion battery charges in 2.5 hours
- Features push-button tail switch
- Charge indicator:
 - Red - Charging
 - Green - Charged
- IPX4 water-resistant; 1m impact resistance tested
- 5.95" (151 mm); 1.8 oz. (51g) with battery



18650 USB BATTERY USB RECHARGEABLE LITHIUM ION BATTERY

22101 18650 USB Battery

22102 18650 USB Battery [2-Pack]

- 18650 button-top lithium ion battery with on-board safety control circuit
- USB rechargeable; also charges in charger holder
- Charges in 5 hours using USB cord
- 2.75 in (7.0 cm); 1.7 oz (48 grams)

THE 18650 THAT TURNS HIGH-PERFORMANCE LIGHTS INTO RECHARGEABLE SYSTEMS.

FOR USE WITH RAILMOUNT HL-X LASER, PROTAC HL-4, POLYTAC X, PROTAC 2L-X, PROTAC HL-X, PROTAC HL 5-X, SIEGE X, VANTAGE 180 X, AND USB-HAZ-LO HEADLAMP.

18650 USB BATTERY BANK CHARGER USB RECHARGEABLE LITHIUM ION BATTERY

20224 w/Batteries, **20221** without Batteries // 8-Unit Bank Charger - 120V/100V AC

20225 w/Batteries, **20222** without Batteries // 8-Unit Bank Charger - 230V/240V AC

20223 w/Batteries, **20220** without Batteries // 8-Unit Bank Charger - 12V DC

- Organize, store and charge up to eight 18650 batteries; charge time: 5.25 hours
- Charge bays securely hold batteries in place - ideal for truck mounting
- Charge indicators over each battery slot: red = charging, green = charged
- Low-profile - 1" (2.54 cm) - minimal mounting area required
- Impact-resistant polymer construction
- 10.45" x 4.74" x 1" (26.54x12.06x2.54 cm); 7.6 oz. (216g) w/o batteries; 20.88 oz. (592g) w/ batteries
- Meets requirements of NFPA 1901-14.1.10.2 (2016) mounted in upright position



180° rotating light bar aims the beam where you need it.

STRION SWITCHBLADE™ COMPACT, RECHARGEABLE, MULTI-FUNCTION WORKLIGHT

74852 Strion Switchblade - 230V AC 1 holder

74853 Strion Switchblade - 240V UK/AUS AC 1 holder

74851 Strion Switchblade - 120V/100V AC 1 holder

74854 Strion Switchblade - 120V/100V AC PiggyBack®

74850 Strion Switchblade - with USB cord

- Five lights in one: droplight, hands-free light, bright white light, UV light, it's a light with Streamlight's Color-Rite Technology
- Work light features a 180° rotating light bar that aims the beam where you need it
- Double-sided light bar with cool white LEDs on one side, 90 CRI LEDs with Streamlight's Color-Rite technology and a UV LED on the other
 - Cool white LEDs provide bright white light: 500 lumens; runs 3 hours
 - 90 CRI LEDs using Streamlight's Color-Rite Technology for paint matching or to differentiate between wire colors: 400 lumens; runs 3 hours
 - UV LED for leak detection: 500 mW; runs 5 hours
- Durable hinge; folds for storage
- Hands-free features:
 - Magnetic base
 - Stowable hang hook
 - Foot provides stability to stand on end; lip offers a secondary hook option
- Chemical-resistant lens - withstands most common automotive chemicals
- High-impact, super-tough nylon polymer construction with "Rocky Stipple" texture for a sure grip
- 2m impact resistance tested
- Lithium ion battery charges in 4 hours - uses existing Strion battery #74175
 - Charges via USB source or Strion charger or Strion PiggyBack® charger
- Folded length: 9.8" [24.89 cm]; Extended length: 17" [43.18 cm]



Hands-free applications:
Tail-end magnet, Stowable Hang Hook, and Stable Foot.



FLIPMATE™ COMPACT, USB RECHARGEABLE MULTI-FUNCTION WORKLIGHT

61500 FlipMate - with USB cord - Black

61501 FlipMate - with USB cord - Red

61502 FlipMate - with USB cord - Blue

- Compact worklight with cool white LEDs and 90 CRI LEDs with Streamlight's Color-Rite technology each with high and low modes
 - Cool white LEDs provide bright white light
 - High: 500 lumens; runs 2.5 hours
 - Low: 250 lumens; 5.75 hours
 - 90 CRI LEDs using Streamlight's Color-Rite Technology™ for paint matching or to differentiate between wire colors:
 - High: 400 lumens; runs 2.5 hours
 - Low: 200 lumens; runs 6 hours
- Light bar rotates 270° to aim the beam where you need it
- Hands-free features: magnetic base or stowable hang hook
- Machined aircraft aluminum construction; unbreakable polycarbonate lens
- IPX4 water-resistant; 2m impact resistance tested
- USB rechargeable; lithium ion battery recharges in 4.5 hours
- Folded length: 4.58" [11.63 cm]; Extended length: 7.94" [20.17 cm]; 8.7 oz [247g]



SYCLONE® COMPACT, USB RECHARGEABLE MULTI-FUNCTION WORKLIGHT

61510 Syclone - with USB cord

- Ultra-compact worklight with cool white LEDs and 90 CRI LEDs with Streamlight's Color-Rite technology - each with high, medium and low modes
- Spot with cool white LEDs provide bright white light
 - High: 400 lumens; 141m beam; runs 2 hours
 - Medium: 200 lumens; 95m beam; runs 4.5 hours
 - Low: 100 lumens; 72m beam; runs 9.5 hours
- Flood with 90 CRI LEDs using Streamlight's Color-Rite Technology for paint matching or to differentiate between wire colors:
 - High: 300 lumens; 48m beam; runs 2 hours
 - Medium: 150 lumens; 35m beam; runs 4 hours
 - Low: 75 lumens; 24m beam; runs 8 hours
- Head swivels 360° to aim the beam where you need it; adjustable with one hand
- Hands-free features: magnetic base or stowable hang hook
- Tough thermoplastic construction; chemical-resistant lens - withstands most common automotive chemicals
- IPX4 water-resistant; 2m impact resistance tested
- USB rechargeable; lithium polymer battery recharges in 4.5 hours
- 2.97" [7.54 cm]; 5.3 oz [150g]



Hands-free applications:
1.) Magnetic base
2.) Stowable hang hook

ENDURO® PRO USB USB RECHARGEABLE MULTI-FUNCTION HEADLAMP

61435 Enduro Pro USB - USB cord and elastic headstrap

- Spot and flood beams, each with high, medium and low modes
- Spot for distance lighting:
 - High: 200 lumens; 91m beam; runs 6.25 hours
 - Medium: 90 lumens; 60m beam; runs 19 hours
 - Low: 25 lumens; 32m beam; runs 48 hours
- Flood for area illumination for tasks at arm's length:
 - High: 145 lumens; 30m beam; runs 7 hours
 - Medium: 50 lumens; 18m beam; runs 21 hours
 - Low: 15 lumens; 11m beam; runs 48 hours
- Multi-function push-button switch with charge status indicator
- Tough polycarbonate thermoplastic construction with elastomer over mold; unbreakable polycarbonate lens
- USB rechargeable lithium polymer battery charges in 4 hours
- 45° tilting head
- IPX4 water-resistant; 2m impact resistance tested
- Includes USB cord and elastic headstrap
- 3.6 oz [102g]



Multi-function push-button switch with charge indicator.
Battery charges in approx. 4 hours





Streamlight, Inc.
30 Eagleville Road
Eagleville, PA U.S.A 19403-3996

streamlight.com // streamlightgear.com
(800) 523-7488 Toll-Free
(800) 220-7007 Fax
(610) 631-0600
(610) 631-0712 Fax



NFPA®



©2020 Streamlight, Inc. ISO 9001:2015 certified 991073 1/20 asi/89871 // **STAY CONNECTED WITH US:**



All rights reserved. Trademarks of companies mentioned herein appear for identification purposes only and are the property of their respective companies.

#STREAMLIGHTSTRONG