

INTERNATIONAL MILITARY DIVISION



STREAMLIGHT®

**PROFESSIONAL
ILLUMINATION TOOLS**

TABLE OF CONTENTS BY PRODUCT LINE

// SIDEWINDER® SERIES



// TLR® SERIES



// TLR® RAIL MOUNT SERIES



// PROTAC® RAIL MOUNT SERIES



// PROTAC® AND POLYTAC® SERIES



ProTac®
90X
pg. 48



ProTac®
1L-1AA
pg. 48



ProTac®
2.0
pg. 49



ProTac®
2.0 HP
pg. 49



ProTac®
2AA-X
pg. 50



ProTac®
2L
pg. 50



ProTac®
2L-X
pg. 50



ProTac
HL®
pg. 51



ProTac®
HL-X
pg. 51



ProTac®
HPL USB
pg. 52



ProTac HL® USB
pg. 52



ProTac® HL 6
pg. 53



PolyTac® X
pg. 54



PolyTac® 1X
pg. 54

NEW

// WEDGE® SERIES



Wedge®
pg. 47



Wedge® XT
pg. 47



Wedge® SL
pg. 47

NEW

// STINGER® SERIES



Stinger® 2020
pg. 56



Stinger®
Color-Rite®
pg. 56



Stinger LED HL®
Stinger DS LED HL®
pg. 57



Stinger® LED
Stinger DS LED®
pg. 57

// STRION® SERIES



Strion® 2020
pg. 60



Strion® LED
Strion® DS
pg. 61



Strion® LED HL
Strion® DS HL
pg. 61

// WAYPOINT® SERIES



Waypoint®
pg. 62



Waypoint® 400
pg. 62

// SIEGE® SERIES



Super Siege®
pg. 62



The Siege®
pg. 63



Siege® AA
pg. 63

// PORTABLE SCENE LIGHT SERIES



Portable Scene Light II
pg. 64



Portable Scene Light
pg. 65

// STREAM® SERIES



MegaStream®
USB
pg. 66



MegaStream®
HP USB
pg. 67



MacroStream®
USB
pg. 67



MicroStream®
USB
pg. 68



MicroStream®
pg. 68



Stylus®
pg. 68



Stylus Pro® USB //
Stylus Pro® USB UV
pg. 69



Stylus Pro®
pg. 69

// MISCELLANEOUS



ClipMate®
USB
pg. 70



Streamlight
Jr.® LED
pg. 70



Pocket
Mate®
pg. 70



Nano
Light® II
pg. 70



SpeedLocker®
pg. 31

// HEADLAMPS



ProTac® 2.0
Headlamp pg. 71



Bandit®
pg. 71



Sledge®
pg. 71

NEW



SIDEWINDER STALK®



IP67

Military helmet light system with flexible stalk

- Provides ultimate maneuverability, multiple mounting options, and a flexible stalk to aim the beam
- Features white, IR, red, blue, and green LEDs – all located in the head mounted on a flexible stalk – each with low, medium, high, and strobe modes along with an additional IR/IFF beacon
- A separate Identification Friend or Foe (IFF) switch lets you use both the main light and IFF when needed

Description	Item #	COO	TAA
Sidewinder Stalk - Includes helmet clip, (1) CR123A and (1) AA alkaline battery - Coyote - Mailer	14300	US	YES
Sidewinder Stalk - Includes helmet clip, (1) CR123A and (1) AA alkaline battery - Black - Mailer	14310	US	YES
Sidewinder Stalk - Includes helmet clip, ARC rail mount and assembly, (1) CR123A and (1) AA alkaline battery - Coyote - Mailer	14301	US	YES
Sidewinder Stalk - Includes helmet clip, ARC rail mount and assembly, (1) CR123A and (1) AA alkaline battery - Black - Mailer	14311	US	YES
Sidewinder Stalk - Includes helmet clip, E-Mount, (1) CR123A and (1) AA alkaline battery - Coyote - Mailer	14302	US	YES
Sidewinder Stalk - Includes helmet clip, (1) CR123A and (1) AA alkaline batteries - Coyote - Retail Box	14306	US	YES
Sidewinder Stalk - Includes ARC rail mount and assembly, (1) CR123A and (1) AA alkaline battery - Coyote - Retail Box	14307	US	YES
Sidewinder Stalk - Includes helmet clip, E-Mount, (1) CR123A and (1) AA alkaline battery - Coyote - Retail Box	14308	US	YES

Size and Weight	Battery
14 cm; AA w/Loop and Hook Adapter: 81.65g // CR123A w/Loop and Hook Adapter: 90.7g	(1) AA alkaline or lithium or (1) CR123A lithium batteries



The Sidewinder Stalk can be configured to mount on any type of combat, vehicle crew or aviation helmet system and/or MOLLE vest platform, or be directly attached to the brim of a patrol cap.

#14303 - Sidewinder Stalk Helmet Clip
Durable belt/clothing clip with integral helmet mount features



#14304 - Sidewinder Stalk ARC Rail Clip
ARC Rail Clip



#14305 - Sidewinder Stalk ARC Rail Mount
Hook and loop adapter plate



High 100% Output - CR123A

	WHITE LED	IR LED	RED LED	BLUE LED	GREEN LED	3535 IFF IR IED
LUMENS	76	5.0 lmW/sr (min) radiant intensity	9	8	20	5.0 lmW/sr (min) radiant intensity
DISTANCE	28m	---	7m	8m	12m	---
RUN TIME	5.6 hrs	32 hrs	19 hrs	13 hrs	13 hrs	21 hrs

High 100% Output - AA LITHIUM/ALKALINE

	WHITE LED	IR LED	RED LED	BLUE LED	GREEN LED	3535 IFF IR IED
LUMENS	57	5.0 lmW/sr (min) radiant intensity	9	8	20	5.0 lmW/sr (min) radiant intensity
DISTANCE	23m	---	7m	8m	12m	---
RUN TIME Lithium	6 hrs	33 hrs	19 hrs	13 hrs	13 hrs	32 hrs
RUN TIME Alkaline	3.8 hrs	20 hrs	10 hrs	6 hrs	5 hrs	19 hrs

SIDEWINDER STALK BATTERY RUN TIME

CR123A LITHIUM BATTERY				
LED	LOW	MEDIUM	HIGH	STROBE
WHITE	95 hrs	15 hrs	5.6 hrs	11 hrs
RED	112 hrs	36 hrs	19 hrs	34 hrs
GREEN	80 hrs	27 hrs	13 hrs	25 hrs
BLUE	80 hrs	27 hrs	13 hrs	25 hrs
IR	174 hrs	57 hrs	32 hrs	61 hrs
IR W/ IFF BEACON	150 hrs	40 hrs	21 hrs	43 hrs
AA LITHIUM / ALKALINE BATTERY				
WHITE	79 hrs (lith) 66 hrs (alk)	16 hrs (lith) 8 hrs (alk)	6 hrs (lith) 3.8 hrs (alk)	11 hrs (lith) 5.5 hrs (alk)
RED	109 hrs (lith) 85 hrs (alk)	36 hrs (lith) 24 hrs (alk)	19 hrs (lith) 10 hrs (alk)	36 hrs (lith) 25 hrs (alk)
GREEN	84 hrs (lith) 55 hrs (alk)	26 hrs (lith) 15 hrs (alk)	13 hrs (lith) 5 hrs (alk)	23 hrs (lith) 17 hrs (alk)
BLUE	77 hrs (lith) 61 hrs (alk)	25 hrs (lith) 16 hrs (alk)	13 hrs (lith) 6 hrs (alk)	25 hrs (lith) 18 hrs (alk)
IR	173 hrs (lith) 145 hrs (alk)	55 hrs (lith) 39 hrs (alk)	33 hrs (lith) 20 hrs (alk)	60 hrs (lith) 41 hrs (alk)
IR W/ IFF BEACON	187 hrs (lith) 115 hrs (alk)	51 hrs (lith) 38 hrs (alk)	32 hrs (lith) 19 hrs (alk)	47 hrs (lith) 35 hrs (alk)



SIDEWINDER® X



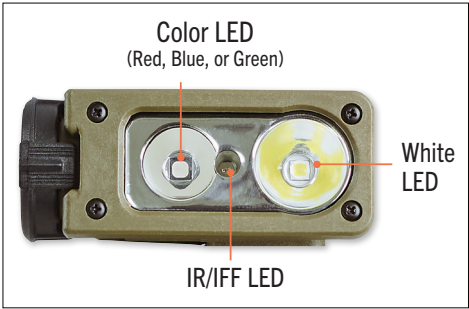
Multi-fuel, high-output military light with 185° tilting head

- White, red, blue, green and IR LEDs (see specific model)
- Pull-to-turn locking rotary knob prevents accidental mode changes
- Cord attachment holes on body, capable of supporting 50 lbs. of load
- Fits existing Sidewinder helmet mounts and adapters



Push button on/off switch and rotary selector knob

Gear clip with integrated helmet mount features



Multiple mounting options for your helmet



Description	Item #
Sidewinder X - UC (User Configurable) Model - Includes (2) AA alkaline batteries - Coyote	14803
Sidewinder X - Military Model - White, Red, Blue and IR LEDs - Includes E-Mount and (2) AA alkaline batteries - Coyote	14800
Sidewinder X Military Model - White, Red, Blue and IR LEDs - Includes (2) AA alkaline batteries - Coyote	14801
Sidewinder X - Aviation Model - White, Green, Blue and IR LEDs - Includes MOLLE retainer and (2) AA alkaline batteries - Coyote	14802

****Military Model:** white, red, blue IR LEDS // **Aviation Model:** white, green, blue IR LEDS // **UC Model:** user chooses between red, green, or blue



	HIGH	MED 2	MED 2	LOW
LUMENS	275	80	35	5
CANDELA	3,200	900	400	50
DISTANCE	113m	60m	40m	14m
RUN TIME Alkaline	4.75 hrs	13 hrs	30 hrs	150+ hrs
RUN TIME CR123A	2.75 hrs	8 hrs	19 hrs	100+ hrs

Strobe runs 10.5 hours (AA) // 5.75 hours (CR123A)

IR and Color LEDs					
		IR	RED	BLUE	GREEN
HIGH MODE	LUMENS	50mW	6.5	2.0	8.0
	CANDELA	---	40	12	83
	DISTANCE	---	13m	7m	18m
	RUN TIME AA	40 hrs	50 hrs		
	RUN TIME CR123A	20 hrs	30 hrs		
LOWER MODE RUN TIMES	MED 2 60%	130 hrs (AA) 65 hrs (CR123A)	100 hrs (AA) // 70 hrs (CR123A)		
	MED 1 25%	330 hrs (AA) 170 hrs (CR123A)	250 hrs (AA) // 150 hrs (CR123A)		
	LOW 5%	600+ hrs (AA) 300+ hrs (CR123A)	300+ hrs (AA) // 200+ hrs (CR123A)		
	STROBE	100+ hrs (AA) // 50+ hrs (CR123A)			

Size and Weight	Battery
11.7 cm; CR123A: 93.6g // AA: 124.7g	(2) AA alkaline batteries or (1) CR123A lithium for extended operation in extreme temps (-40°F to 150°F)

SIDEWINDER®



High-impact, hands-free military light with 185° tilting head

- White, red, blue, green and IR LEDs (see specific model)
- Pull-to-turn locking rotary knob prevents accidental mode changes
- Cord attachment holes on body, capable of supporting 50 lbs. of load
- Gear clip to allow for ideal positioning of the light



Description	Item #	NSN/MCN #	COO	TAA
Sidewinder - Military Model - Includes (2) AA alkaline batteries - Clam - Coyote	14000	6230-01-556-0487	US	YES
Sidewinder - Military Model - Includes (2) AA alkaline batteries - Box - Coyote	14032	6230-01-571-1331	US	YES
Sidewinder - Military Model - Includes helmet mount and (2) AA alkaline batteries - Clam - Coyote	14027	6230-01-571-8752	US	YES
Sidewinder - Military Model - Includes E-mount and (2) AA alkaline batteries - Clam - Coyote	14031	---	US	YES
Sidewinder - Aviation Model - Includes (2) AA alkaline batteries - Clam - Coyote	14008	---	US	YES
Sidewinder Aviation Model - Includes MOLLE retainer and (2) AA alkaline batteries - Box - Coyote	14024	6230-01-572-6216	US	YES

****Military Model:** white, red, blue IR LEDs // **Aviation Model:** white, green, blue IR LEDs



Size and Weight	Battery
11.81 cm; Lithium: 124g Alkaline: 142g	(2) AA alkaline or AA lithium for extended operation in extreme temperatures (-40°F to +150°F)

	OUTPUT	LOW 5%	MED 1 25%	MED 2 60%	HIGH 100%	STROBE 100%
WHITE	55 lumens	100 hrs+	45 hrs	11 hrs	5.5 hrs	10 hrs
IR	25mW /sr (min) radiant intensity	200 hrs+	140 hrs	60 hrs	24 hrs	40 hrs
RED	1 lumen	200 hrs+	140 hrs	60 hrs	24 hrs	40 hrs
BLUE	1.8 lumens	150 hrs+	100 hrs	35 hrs	16 hrs	30 hrs
GREEN	4.5 lumens	150 hrs+	100 hrs	35 hrs	16 hrs	30 hrs

All run time to 10% of initial output level. Illumination output electronically regulated.

SIDEWINDER® RESCUE



A lightweight hands-free lighting tool with four different color LEDs, each with varying intensities for a wide variety of tasks

- Flashing beacon coupled with "Slide-in-Place" diffuser projects omni-directional light to signal for help
- Securely attached to MOLLE or other straps using MOLLE retainer
- Rescue Model includes white, green, blue and IR LEDs with diffuser

Description	Item #	NSN/MCN #	COO	TAA
Sidewinder Rescue Kit - Includes MOLLE retainer, paracord and (2) AA alkaline batteries - Box - Coyote	14065	6230-01-581-2486	US	YES
Sidewinder Rescue Kit - Includes MOLLE retainer, paracord and (2) AA alkaline batteries - Clam - Coyote	14069	---	US	YES
Sidewinder Rescue - Includes (2) AA alkaline batteries - Clam - Coyote	14067	----	US	YES

Size and Weight	Battery
11.81 cm; Lithium: 124g // Alkaline: 142g	(2) AA alkaline or AA lithium for extended operation in extreme temperatures (-40°F to +150°F)



Aluminum plate provides flat surface to adhere Velcro® for attaching to helmet

Cord attachment for paracord lanyard, which provides extra security from loss of light and allows it to be worn around the neck



NEW

SIDEWINDER COMPACT® III



Extremely versatile military light with 185° tilting head for multiple tasks

- White, red, blue, green and IR LEDs (see below for specific model)
- Fits in the palm of your hand or clips to MOLLE vest, belt, hat or pocket
- Cord attachment holes on body, capable of supporting 50 lbs. of load
- Meets MIL-STD-810F, METHOD 512.4



Alkaline	HIGH	MED 2	MED 1	LOW
LUMENS	140	85	35	4
CANDELA	1,800	1,000	450	60
DISTANCE	85m	63m	42m	15m
RUN TIME	4 hrs	6 hrs	10 hrs	70+ hrs
AA: Strobe runs 8 hrs				

CR123A	HIGH	MED 2	MED 1	LOW
LUMENS	275	80	35	5
CANDELA	3,200	900	400	50
DISTANCE	113m	60m	40m	14m
RUN TIME	2.75 hrs	8 hrs	19 hrs	100+ hrs
CR123A: Strobe runs 5.75 hrs				

IR and Color LEDs					
		IR	RED	BLUE	GREEN
HIGH MODE	LUMENS	50mW	6.5	2.0	8.0
	CANDELA	---	40	12	83
	DISTANCE	---	13m	7m	18m
	RUN TIME	20 hrs (AA) 20 hrs (CR123A)	25 hrs (AA) // 30 hrs (CR123A)		
LOWER MODE RUN TIMES	MED 2 [60%]	65 hrs (AA) 65 hrs (CR123A)	45+ hrs (AA) // 70 hrs (CR123A)		
	MED 1 [25%]	150 hrs (AA) 170 hrs (CR123A)	110+ hrs (AA) // 150 hrs (CR123A)		
	LOW [5%]	250+ hrs (AA) 300+ hrs (CR123A)	250+ hrs (AA) // 200+ hrs (CR123A)		
	Strobe runs: AA : 40+ hrs // CR123A: 50+ hrs				

Description	Item #	NSN/MCN #	COO	TAA
Sidewinder Compact III User Configurable (UC) Model - Includes high offset ARC rail mount, (1) AA alkaline battery and (1) CR123A lithium battery - Coyote	14210	---	---	---
Sidewinder Compact III User Configurable (UC) Model - Includes Hook & Loop Mount, headstrap, (1) AA alkaline battery and (1) CR123A lithium battery - Coyote	14211	---	---	---
Sidewinder Compact III User Configurable (UC) Model - Includes E-Mount, headstrap, (1) AA alkaline battery and (1) CR123A lithium battery - Coyote	14519	---	---	---
Sidewinder Compact III Military Model - Includes helmet mount, headstrap, (1) AA alkaline battery and (1) CR123A lithium battery - Coyote	14213	---	---	---
Sidewinder Compact III User Configurable (UC) Model - Includes (1) AA alkaline battery and (1) CR123A lithium battery - Coyote	14510	---	---	---
Sidewinder Compact III Military Model - Includes E-mount, headstrap, (1) AA alkaline battery and (1) CR123A lithium battery - Coyote	14513	6230-01-613-4312	US	YES
Sidewinder Compact III Military Model - Includes (1) AA alkaline battery and (1) CR123A lithium battery - Coyote	14516	---	US	YES
Sidewinder Compact III Aviation Model - Includes NVG mount (works with HGU-84 rotary wing air crew helmets), (1) AA alkaline battery and (1) CR123A lithium battery - Coyote	14533	6230-01-626-6789	US	YES

****Military Model:** white, red, blue IR LEDs // **Aviation Model:** white, green, blue IR LEDs // **UC Model:** user chooses between red, green, or blue

Size and Weight

Battery

5.1 cm; AA: 85g // CR123A: 76.5g (1) CR123A lithium, (1) AA alkaline, or (1) AA lithium battery

SIDEWINDER BOOT®

IPX7

Durable, hands-free task flashlight used as a standard light for boot camp, recruit/basic training and wherever extra military instruction occurs

- Super-tough, high-impact polymer case that's durable and weather resistant
- Includes an integrated red filter that slides into place when needed

Description	Item #
Sidewinder Boot - Includes (2) AA alkaline batteries - Coyote	14975
Size and Weight	Battery
10.9 cm; Lithium: 82g // Alkaline: 100g	(2) AA alkaline or AA lithium

	HIGH	LOW
LUMENS	55	7
CANDELA	1,000	140
DISTANCE	63m	24m
RUN TIME	8 hrs	90 hrs



SIDEWINDER® ACCESSORIES

DESCRIPTION	ITEM #	SIDEWINDER X	SIDEWINDER	SIDEWINDER COMPACT III	SIDEWINDER STALK	SIDEWINDER BOOT
Helmet Clip - Black	14303				√	
ARC Rail Clip - Coyote	14304				√	
ARC Rail Mount - Coyote	14305				√	
Rail Mount Adapter for Helmet - Coyote NSN# 8470-01-633-3996	14057	√	√	√	√	√
Hook and Loop Mount	14073	√	√	√	√	√
Contour ARC Rail Mount	14114	√	√	√	√	√
Sidewinder High Offset ARC Mount	14115	√	√	√	√	
Night Vision Goggle Mount - Tactical (works with DoD, NATO, and ISAF combat helmets)	14155	√	√	√	√	√
Night Vision Goggle Mount - Aviation (works with HGU-84 rotary wing air crew helmets) NSN# 5340-01-641-3916	14135	√	√	√	√	√
Safety Wand - Glow in the Dark	14902		√			
Elastic Headstrap	14059	√	√	√		√
E-Mount (ACH, ECH, MICH, LWH compatible) NSN# 5340-01-641-3930	14136	√	√	√	√	√
Paracord	14138	√	√	√		√
E-Mount Kit - Includes E-mount, headstrap, and MOLLE plate	14112	√	√	√		√
Rail Mount Kit - Includes rail mount, headstrap and MOLLE plate	14113	√	√	√		√
MOLLE Retainer Replacement	14030	√	√	√		
CR123A Lithium Batteries - 2 pack	85175	√	√	√	√	
CR123A Lithium Batteries - 6 pack	85180	√	√	√	√	
CR123A Lithium Batteries - 12 pack	85177	√	√	√	√	
CR123A Lithium Batteries - 400 pack	85179	√	√	√	√	



LIGHT ONLY

COMPACT & FULL FRAME PISTOLS

UNIVERSAL RAIL MOUNT MODELS



TLR-1® HP



TLR-1® HP-X



TLR-1 HL®



TLR-1 HL®-X



TLR-1® // TLR-1®s

NEW



TLR-3®X

UPGRADED



TLR-7® X

UPGRADED



TLR-7® X Contour Remote

UPGRADED



TLR-7® HL-X



TLR-9®

SUBCOMPACT PISTOLS

TRIGGER GUARD AND RAIL MOUNT MODELS

NEW



TLR-3®X



TLR-6®
Non-Laser



TLR-7® X sub



TLR-7® HL-X sub

LONG GUN/AR

SHOTGUN FOREND & RAIL MOUNT MODELS



TL-Racker®



TLR® RM 1



TLR® RM 1 HL-X



TLR® RM 2

NEW



ProTac®
Rail Mount 1L-X //
Rail Mount 1L-X Pro



ProTac®
Rail Mount 1



ProTac®
Rail Mount 2



ProTac® Rail
Mount HL-X



ProTac® Rail Mount
HL-X Pro



ProTac® Rail Mount
HP-X Pro



ProTac® 2.0
Rail Mount



ProTac® 2.0
Rail Mount HP



TLR-1 HL®
(Long Gun Kit)



TLR-1 HP®
(Long Gun Kit)



TLR-1 HPL®
(Long Gun Kit)

LIGHT/LASER COMBO

COMPACT & FULL FRAME PISTOLS

UNIVERSAL RAIL MOUNT MODELS



TLR-2® // TLR-2®s



TLR-2 HL®



TLR-2® G // TLR-2 HL® G



TLR-4® // TLR-4® G



TLR-8® HL-X // TLR-8® HL-X G



TLR-8® X // TLR-8® X G



TLR-10® // TLR-10® G

SUBCOMPACT PISTOLS

TRIGGER GUARD AND RAIL MOUNT MODELS



TLR-6®



TLR-6 HL® //
TLR-6 HL® G



TLR-8® X sub //
TLR-8® X G sub



TLR-8® HL-X //
TLR-8® HL-X G



TLR-8® HL-X sub //
TLR-8® HL-X G sub

LONG GUN/AR

SHOTGUN FOREND AND RAIL MOUNT MODELS



TLR-2® // TLR-2®s



TLR-2 HL®



TLR-2 HL® G



TLR® RM 1 Laser
Red // Green



TLR® RM 2 Laser
Red // Green

SPECIALTY/IR

SHOTGUN FOREND AND RAIL MOUNT MODELS

NEW



ProTac® Rail Mount VIR Pro



TLR-VIR® II



It can be difficult to choose the right weapon-mounted light for your specific gun and application. We want to make the process easier. That's why we designed the TLR Fit Guide to make it easy for you to select the right light for your weapon.

SCAN OR CLICK THE QR CODE TO VIEW OUR TLR FIT GUIDE

WEAPON MOUNT SERIES

Beam Patterns Explained

Choosing the best gun light means pairing the right beam with your needs. Streamlight's range of gun lights offers Traditional, High-Lumen, and High-Candela options, each designed with features tailored to different tactical applications. Whether you need wide area visibility, a powerful pinpoint beam, or a mix of both, Streamlight has a solution to keep you ready for any challenge.



Traditional Beam Pattern: Designed for versatile, multi-purpose use, these lights offer exceptional value across a wide range of lighting needs.

Performance Characteristics	Traditional Product	
<ul style="list-style-type: none">• Optimal balance of candela and lumens - the beam pattern most people expect out of a quality flashlight• Very good all-around use, broadest range of lighting applications• Good focus and arc/periphery light• Longest regulated run times	<ul style="list-style-type: none">• TLR-1° and TLR-1°s• TLR-2° and TLR-2°s• TLR-3°X• TLR-4° Series• TLR-6°• TLR-7° X Series	<ul style="list-style-type: none">• TLR-8° X Series• TLR-9°• TLR-10° Series• ProTac® Rail Mount 1• ProTac® Rail Mount 2

High Lumen Beam Pattern: Delivers maximum brightness with a wide beam pattern, ensuring full situational awareness. Perfect for illuminating smaller spaces where intense light is essential without requiring long-range reach.

Performance Characteristics	High-Lumen Product	
<ul style="list-style-type: none">• High-lumen beam• Maximum illumination - a broader beam pattern with a wider center spot• Shorter regulated run time• More glare/bounce back	<ul style="list-style-type: none">• TLR-1 HL°• TLR-1 HL°-X• TLR-2 HL° Series• TLR-6 HL° Series• TLR-7° HL-X sub	<ul style="list-style-type: none">• TLR-8° HL-X sub Series• ProTac® Rail Mount HL-X Series• ProTac® 2.0 Rail Mount• ProTac® Rail Mount 1L-X• ProTac® Rail Mount VIR Pro

High Candela Beam Pattern: Delivers powerful, long-distance beam with high-lumen output - perfect for down-range applications requiring precision and clarity.

Performance Characteristics	High-Candela Product	
<ul style="list-style-type: none">• High-candela beam• Casts a wide, bright beam with a tight, focused center spot for greater down-range light• More light on your target at a distance	<ul style="list-style-type: none">• TLR-1° HP• TLR-1° HP-X• TLR-1 HPL°• TLR-7° HL-X Series• TLR-8° HL-X Series	<ul style="list-style-type: none">• TLR® RM 1 Series• TLR® RM 2 Series• ProTac® 2.0 Rail Mount HP• ProTac® Rail Mount HP-X Pro

TLR-1® EVOLUTION



STREAMLIGHT®

2006

- First Generation
- 80 Lumens
- Later Upgraded to 300 Lumens

2013

- 630 Lumens
- Later Upgraded to 1,000 Lumens

2024

- 1,500 Lumens
- Front Loaded Batteries
- Multi-Fuel
- Paddle Switches

2025

- 65,000 Candela
- Original Form Factor

2025

- 77,000 Candela
- Front Loaded Batteries
- Multi-Fuel
- Paddle Switches

THEN



TLR-1®



TLR-1® HL



TLR-1 HL®-X



TLR-1® HP



TLR-1® HP-X

NOW

TLR-1 HL®

WHITE LIGHT ILLUMINATOR



Provides for maximum illumination with a wide beam pattern that lights up large areas so you can identify what is nearby

- Rail-grip clamp system securely attaches/detaches quickly and safely
- User programmable strobe for disorienting
- Unbreakable, scratch-resistant, gasket sealed lens
- Ambidextrous momentary/constant-on operation

LUMENS	1,000
CANDELA	20,000
DISTANCE	283m
RUN TIME	1.5 hrs



TLR-1 HL Long Gun Kit



TLR-1 HL Dual Remote Kit



Description	Item #	COO	TAA
TLR-1 HL - Includes Rail Locating Keys for use with GLOCK® style, 1913 Picatinny, Smith & Wesson® 99/TSW, SIG P320 and Beretta® 90-two and (2) CR123A batteries - Black	69260	US	YES
TLR-1 HL - Includes Rail Locating Keys for use with GLOCK® style, 1913 Picatinny, Smith & Wesson® 99/TSW, SIG P320® and Beretta® 90-two and (2) CR123A batteries - FDE	69266	US	YES
TLR-1 HL - Includes Rail Locating Keys for use with GLOCK® style, 1913 Picatinny, Smith & Wesson® 99/TSW, SIG P320® and Beretta® 90-two and (2) CR123A batteries - FDE Brown	69267	US	YES
TLR-1 HL - Long Gun Kit - Includes safe off remote door switch, remote pressure switch, mounting clips, standard door switch and (2) CR123A batteries - Black	69262	US	YES
TLR-1 HL - Long Gun Kit - Includes safe off remote door switch, remote pressure switch, mounting clips, standard door switch and (2) CR123A batteries - Flat Dark Earth	69888	US	YES
TLR-1 HL - Dual Remote Kit - Includes dual remote pressure switch, "safe off" door switch, mounting clips and (2) CR123A batteries - Black	69889	US	YES

Size and Weight	Battery
8.61 cm; 122.5g	(2) CR123A lithium



TLR-1 HL[®]-X

WHITE LIGHT ILLUMINATOR



Multi-fuel, high-lumen, rail-mounted light with front loading batteries

- Wide peripheral beam pattern gives you a powerful 1,500 lumen light
- Standard and extended switches
- Rapid battery replacement without removing the light from your firearm (as shown below)
- SL-B9 battery pack recharges in 2.5 hours

	SL-B9	CR123A
LUMENS	1,500	1,000
CANDELA	20,000	15,000
DISTANCE	283m	245m
RUN TIME	1 hr	1.5 hrs

Description	Item #	COO	TAA
TLR-1 HL-X - Includes Rail Locating Keys for use with GLOCK [®] style, 1913 Picatinny, Smith & Wesson [®] 99/TSW, SIG P320 and Beretta [®] 90-two and (2) CR123A batteries - Black	69500	US	YES
TLR-1 HL-X USB - Includes Rail Locating Keys, (2) SL-B9 battery packs and USB-C cord - Black	69501	US	YES

Size and Weight	Battery
8.76 cm; SL-B9: 147g // CR123A: 140g	(2) SL-B9 battery packs or (2) CR123A lithium



TLR-1® HP

WHITE LIGHT ILLUMINATOR



High-candela, gun light for both handguns and long guns

- Secure Mounting: Attaches to handguns with GLOCK®-style rails and all MIL-STD-1913 (Picatinny) rails
- Customizable strobe
- Versatile Use: optional long gun kit available for expanded compatibility

LUMENS	1,000
CANDELA	65,000
DISTANCE	510m
RUN TIME	1.75 hrs

Description	Item #
TLR-1 HP - Includes Rail Locating Keys and (2) CR123A lithium batteries - Black	59150
TLR-1 HP - Includes Rail Locating Keys and (2) CR123A lithium batteries - FDE	59151
TLR-1 HP Long Gun Kit - Includes Safe off remote door switch, remote pressure switch, mounting clips, standard door switch and (2) CR123A batteries - Black	59152

Size and Weight	Battery
8.61 cm; 122.5g	(2) CR123A lithium batteries



TLR-1® HP-X

WHITE LIGHT ILLUMINATOR



Multi-fuel, high-candela, rail-mounted light with hinged facecap for quick front loading batteries

- Interchangeable Switches: Customize controls for preferred handling
- Programmable strobe
- Rapid battery replacement without removing the light from your firearm (as shown below)
- SL-B9 battery pack recharges in 2.5 hours

	SL-B9	CR123A
LUMENS	1,300	1,000
CANDELA	77,000	53,000
DISTANCE	555m	460m
RUN TIME	1 hr	1.5 hrs

Description	Item #
TLR-1 HP-X - Includes Rail Locating Keys and (2) CR123A lithium batteries - Black	69167
TLR-1 HP-X USB - Includes Rail Locating Keys, (2) SL-B9 battery packs and USB-C cord - Black	69168

Size and Weight	Battery
9.4 cm; SL-B9: 154g // CR123A: 148g	(2) SL-B9 battery packs or (2) CR123A lithium



TLR-1® // TLR-1s®

WHITE LIGHT ILLUMINATOR



IPX7

Durable gun light that produces a concentrated beam with optimum peripheral illumination

- Available in standard or strobe models
- Mounts directly to handguns with GLOCK® style rails and all MIL-STD-1913 (Picatinny) rails

LUMENS	300
CANDELA	12,000
DISTANCE	219m
RUN TIME	2.5 hrs

Description	Item #	NSN/MCN #	COO	TAA
TLR-1 – Includes Rail Locating Keys for use with GLOCK® style, 1913 Picatinny, Smith & Wesson® 99/TSW, SIG P320 and Beretta® 90-two and (2) CR123A lithium batteries - Black	69110	1005-01-525-2118	US	YES
TLR-1s – Includes Rail Locating Keys for use with GLOCK® style, 1913 Picatinny, S&W 99/TSW, SIG P320 and Beretta® 90-two and (2) CR123A lithium batteries - Black	69210	6230-01-601-5130	US	YES

Size and Weight	Battery
8.61 cm; 118.6g	(2) CR123A lithium batteries



TLR-2 HL®

WHITE LIGHT ILLUMINATOR / RED LASER



IPX4

Super bright, 1000 lumen gun light with red aiming laser

- Wide peripheral beam and a 640-660nm red laser
- Unbreakable, scratch-resistant, gasket sealed lens
- Easy, fast battery installation

LUMENS	1,000
CANDELA	20,000
DISTANCE	283m
RUN TIME	1.5 hrs
Laser mode runs 45 hours	

Description	Item #	NSN/MCN #	COO	TAA
TLR-2 HL - Includes Rail Locating Keys for use with GLOCK® style, 1913 Picatinny, Smith & Wesson® 99/TSW, SIG P320 & Beretta® 90-two and (2) CR123A lithium batteries - Black	69261	6920-01-661-9705	US	YES

Size and Weight	Battery
8.61 cm; 138.4g	(2) CR123A lithium batteries



TLR-2 HL® G

WHITE LIGHT ILLUMINATOR / GREEN LASER



IPX4

Super bright, 1,000 lumen gun light with green aiming laser

- Wide peripheral beam and a 510-530nm green laser
- Unbreakable, scratch-resistant, gasket sealed lens
- Easy, fast battery installation

LUMENS	1,000
CANDELA	20,000
DISTANCE	283m
RUN TIME	1.5 hrs
Laser mode runs 17 hours	

Description	Item #	NSN/MCN #	COO	TAA
TLR-2 HL G - Includes Rail Locating Keys for use with GLOCK® style, 1913 Picatinny, Smith & Wesson® 99/TSW, SIG P320 & Beretta® 90-two and (2) CR123A batteries - Black	69265	6230-01-659-3699	US	YES

Size and Weight	Battery
8.61 cm; 138.4g	(2) CR123A lithium batteries





TLR-2® // TLR-2s®

WHITE LIGHT ILLUMINATOR / RED LASER

IPX4

Durable gun light with red laser that securely fits a broad range of weapons

- Wide peripheral beam and a 650-660nm red laser
- Mounts directly to handguns with GLOCK® style rails and to all MIL-STD-1913 (Picatinny) rails

LUMENS	300
CANDELA	12,000
DISTANCE	219m
RUN TIME	2.5 hrs
Laser mode runs 48 hours	



Description	Item #	NSN/MCN #	COO	TAA
TLR-2 – Includes Rail Locating Keys for use with GLOCK® style, 1913 Picatinny, Smith & Wesson® 99/TSW, SIG P320® and Beretta® 90-two and (2) CR123A lithium batteries - Black	69120	6230-01-544-1663	US	YES
TLR-2s – Includes Rail Locating Keys for use with GLOCK® style, 1913 Picatinny, Smith & Wesson® 99/TSW, SIG P320® and Beretta® 90-two and (2) CR123A lithium batteries - Black	69230	6230-01-601-5128	US	YES

Size and Weight	Battery
8.61 cm; 133.8g	(2) CR123A lithium

TLR-2® G

WHITE LIGHT ILLUMINATOR / GREEN LASER



IPX4

Durable gun light with green laser that can be seen even in the daylight

- Highly visible beam and a 510-530nm green laser
- User programmable strobe
- Mounts directly to handguns with GLOCK® style rails and all MIL-STD-1913 (Picatinny) rails

LUMENS	300
CANDELA	12,000
DISTANCE	219m
RUN TIME	2.5 hrs
Laser mode: runs 17 hours	

Description	Item #	NSN/MCN #	COO	TAA
TLR-2 G - Includes Rail Locating Keys for use with GLOCK® style, 1913 Picatinny, Smith & Wesson® 99/TSW, SIG P320® and Beretta® 90-two and (2) CR123A lithium batteries - Black	69250	1005-01-633-4225	US	YES

Size and Weight	Battery
8.61 cm; 133.8g	(2) CR123A lithium





TLR-3® X

6,500 CANDELA | MULTI-FUEL
POLYMER CONSTRUCTION

FITS SUBCOMPACT AND COMPACT HANDGUNS



NEW

TLR-3® X

WHITE LIGHT ILLUMINATOR



IPX7

Designed for subcompact and compact handguns, offering 550 lumens and 161 meter beam distance for clear visibility

- Impact and chemical-resistant, heat-stabilized polymer construction
- Reversible jaws for compatibility across compact/sub compact pistols
- One-handed snap on tighten interface keeps hands away from muzzle when attaching and detaching

LUMENS	500
CANDELA	6,500
DISTANCE	161m
RUN TIME SL-B9	1 hr
RUN TIME CR123A	1.5 hrs



Description	Item #	COO	TAA
TLR-3X (1913) - Includes mounting kit with keys, paddles, multi-tool and (1) CR123A lithium battery	59100	US	YES
TLR-3X (1913 Slim) - Includes mounting kit with key, paddles, multi-tool and (1) CR123A lithium battery	59102	US	YES
TLR-3X (SIG SAUER® P365®/XL closed rail systems) - Includes mounting kit with key, paddles, multi-tool and (1) CR123A lithium battery	59104	US	YES
TLR-3X USB (1913) - Includes mounting kit with keys, paddles, multi-tool and (1) SL-B9 battery pack	59101	US	YES
TLR-3 X USB (1913 Slim) - Includes mounting kit with key, paddles, multi-tool, and (1) SL-B9 battery pack	59103	US	YES
TLR-3X USB (SIG SAUER® P365®/XL closed rail systems) - Includes mounting kit with key, paddles, multi-tool, and (1) SL-B9 battery pack	59105	US	YES

Size and Weight	Battery
6.99 cm; SL-B9: 63.8g // CR123A: 60.9g	(1) SL-B9 battery pack or (1) CR123A lithium battery

Streamlight’s “X” Series indicates they are multi-fuel lights - you have the option to choose our rechargeable batteries which could save you money and reduce waste!

Rechargeable batteries can be used over and over, leaving fewer batteries to be manufactured (and transported) than with disposable batteries, helping to reduce both air and water pollution. Consuming up to 23 times less non-renewable natural resources they are making a positive impact on the environment and helping to reduce global warming.



STANDARD BATTERIES

- Very costly to replace
- Must be replaced often
- Create more packaging
- Create more downstream waste

VS.



STREAMLIGHT RECHARGEABLE BATTERIES

- Only need to be replaced every 2 - 5 years
- Reduce downstream waste
- Excellent performance
- 2 year battery warranty

SL-B9® PROTECTED LITHIUM-ION USB RECHARGEABLE BATTERY PACK

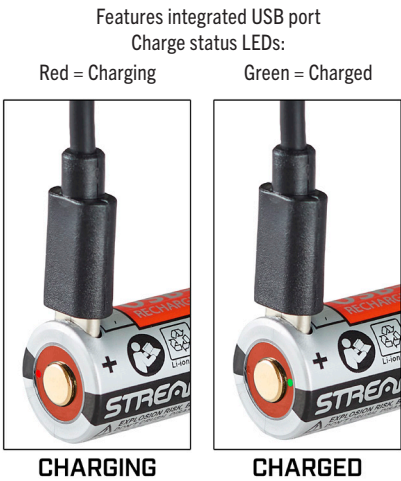
The battery that transforms multi-fuel, high performance gun lights into rechargeable systems

- Features USB-C input and charge status indicators; recharges in 2.5 hours
- Integrated safety circuit protects battery from overcharge



Description	Item #
SL-B9 Li-Ion USB rechargeable battery pack - 2pk	20237
SL-B9 Li-Ion USB rechargeable battery pack - 8pk	20238
55.88 cm USB-C Cord	22084

Size and Weight	Battery
3.45 x 1.7 cm; 19.8g	850mAh SL-B9 protected Li-Ion USB rechargeable battery pack





TLR-6®

WHITE LIGHT ILLUMINATOR / RED LASER

Designed to securely attach to a variety of subcompact handguns; features 640-660nm red laser

- Tool-less battery replacement without removal from the weapon or the need to re-sight the laser
- Ambidextrous push-button switches on either side for easy operation
- Securely attaches to the trigger guard on hand guns
- Models available without laser



IPX4



LUMENS	100
CANDELA	2,000
DISTANCE	89m
RUN TIME	1 hr
Laser mode run 11 hours	

Description	Item #	NSN/MCN #	COO	TAA
TLR-6 (GLOCK® 42/43) White LED and Red Laser – Includes (2) CR-1/3 N lithium batteries – Black	69270	5855-01-691-3049	US	YES
TLR-6 (GLOCK® 26/27/33) White LED and Red Laser – Includes (2) CR-1/3 N lithium batteries – Black	69272	6230-01-682-9566	US	YES
TLR-6 Universal Kit* – Includes LED and Laser module and select TLR-6 body housings – Black	69277	---	US	YES
TLR-6 (M&P® Shield™ 40/9) White LED and Red Laser – Includes (2) CR-1/3 N lithium batteries – Black	69273	---	US	YES
TLR-6 (GLOCK® 42/43) White LED and Red Laser – Includes (2) CR-1/3 N lithium batteries – Flat Dark Earth	69278	---	US	YES
TLR-6 (SIG SAUER® P365) White LED and Red Laser – Includes (2) CR-1/3 N lithium batteries – Black	69284	---	US	YES
TLR-6 (GLOCK® 43X/48) White LED and Red Laser – Includes (2) CR-1/3 N lithium batteries – Black	69286	---	US	YES
TLR-6 (SA Hellcat®) White LED and Red Laser – Includes (2) CR-1/3 N lithium batteries – Black	69287	---	US	YES
TLR-6 (Taurus GX4™) White LED and Red Laser – Includes (2) CR-1/3 N lithium batteries – Black	69288	---	US	YES
TLR-6 (GLOCK® 17/19/21) White LED and Red Laser – Includes (2) CR-1/3 N lithium batteries – Black	69290	---	US	YES
TLR-6 (SA XD®) White LED and Red Laser – Includes (2) CR-1/3 N lithium batteries – Black	69291	---	US	YES
TLR-6 (Smith & Wesson M&P™) White LED and Red Laser – Includes (2) CR-1/3 N lithium batteries – Black	69293	---	US	YES
NON-LASER MODELS				
TLR-6 (GLOCK® 42/43) Without Laser – White LED – Includes (2) CR-1/3 N lithium batteries – Black	69280	---	US	YES
TLR-6 (GLOCK® 26/27/33) Without Laser – White LED – Includes (2) CR-1/3 N lithium batteries – Black	69282	---	US	YES
TLR-6 (M&P® Shield™) Without Laser – White LED – Includes (2) CR-1/3 N lithium batteries – Black	69283	---	US	YES
TLR-6 (SIG SAUER® P365®) Without Laser – White LED – Includes (2) CR-1/3 N lithium batteries – Black	69285	---	US	YES

Size and Weight

5.84 cm; 36g *Size & Weight vary by model*

Battery

(2) CR-1/3 N Lithium

*Universal Kit includes one LED/laser aiming module and the following shells: GLOCK 42, GLOCK 26, M&P Shield, Kahr Arms, SIG SAUER, KIMBER Micro. (Flat Dark Earth, Rail Mount, 1911 & Non Laser models not included)

All Rights Reserved. M&P Shield™, GLOCK®, SIG SAUER®, Springfield Armory®, KIMBER®, Colt®, Ruger®, & Kahr® are registered trademarks of Smith & Wesson, GLOCK, Inc., SIG SAUER, Springfield Inc., Colt, Ruger, KIMBER, IP LLC & Saeilo Enterprises, Inc. Streamlight has not sought endorsement of this product from Smith & Wesson®, GLOCK®, Springfield Inc., SIG SAUER®, KIMBER®, Kahr® Arms or Saeilo Enterprises, Inc.

TLR-6 HL®

WHITE LIGHT ILLUMINATOR / RED LASER OR GREEN LASER



Ultra-compact weapon light with a high-power LED and integrated aiming laser features a rechargeable battery system powering 300 lumens of bright light

- Designed to securely attach to multiple variations of weapons
- Includes three easy-to-swap batteries to triple your run time
- Portable charging case conveniently stores and charges batteries without the need to tether your gun

LUMENS	300
CANDELA	4,250
DISTANCE	130m
RUN TIME	20 min
Red laser runs 9 hours	
Green laser runs 5 hours	



Description	Item #
TLR-6 HL (GLOCK® 42/43) White LED and Red Laser – Includes (3) SL-B2 batteries and charger - Black	69340
TLR-6 HL (GLOCK® 42/43) White LED and Red Laser – Includes (3) SL-B2 batteries and charger - Flat Dark Earth	69341
TLR-6 HL (M&P® Shield™ 40/9) White LED and Red Laser – Includes (3) SL-B2 batteries and charger - Black	69342
TLR-6 HL (GLOCK® Rail Mount) White LED and Red Laser – Includes (3) SL-B2 batteries and charger - Black	69343
TLR-6 HL (SIG SAUER® P365/XL) White LED and Red Laser – Includes (3) SL-B2 batteries and charger - Black	69344
TLR-6 HL G (GLOCK® 42/43) White LED and Green Laser – Includes (3) SL-B2 batteries and charger - Black	69350
TLR-6 HL G (GLOCK® 42/43) White LED and Green Laser – Includes (3) SL-B2 batteries and charger - Flat Dark Earth	69351
TLR-6 HL G (M&P® Shield™ 40/9) White LED and Green Laser – Includes (3) SL-B2 batteries and charger - Black	69352
TLR-6 HL G (GLOCK® Rail Mount) White LED and Green Laser – Includes (3) SL-B2 batteries and charger - Black	69353
TLR-6 HL G (SIG SAUER® P365/XL) Without Laser – White LED – Includes (3) SL-B2 batteries and charger - Black	69354

All Rights Reserved. M&P Shield™, GLOCK®, SIG SAUER®, Springfield Armory®, KIMBER®, Colt®, Ruger®, & Kahr® are registered trademarks of Smith & Wesson, GLOCK, Inc., SIG SAUER, Springfield Inc., Colt, Ruger, KIMBER, IP LLC & Saeilo Enterprises, Inc. Streamlight has not sought endorsement of this product from Smith & Wesson®, GLOCK®, Springfield Inc., SIG SAUER®, KIMBER®, Kahr® Arms or Saeilo Enterprises, Inc.

Size and Weight	Battery
6.35 cm; 31.8g <i>Size & Weight vary by model</i>	(1) SL-B2 battery

SL-B2® charging case

Charges batteries using USB-C cord
Features charge status indicator



UPGRADED

TLR-7[®] X

WHITE LIGHT ILLUMINATOR



Multi-fuel rail-mounted light

- User-interchangeable paddle switches to accommodate your shooting style
- Runs on either one SL-B9 or one CR123A lithium battery
- SL-B9 battery pack recharges in 2.5 hours
- Front loading battery capability

	SL-B9	CR123A
LUMENS	725	550
CANDELA	9,500	7,200
DISTANCE	195m	170m
RUN TIME	1 hr	1.5 hrs

Description	Item #	COO	TAA
TLR-7 X - Includes low switch, high switch, (1) CR123A lithium battery and key kit - Black	69424	US	YES
TLR-7 X - Includes low switch, high switch, (1) CR123A lithium battery and key kit - FDE	69429	US	YES
TLR-7 X USB - Includes key kit, high/low paddle switches, (1) SL-B9 battery pack and USB-C cord - Black	69455	US	YES
TLR-7 X USB - Includes key kit, high/low paddle switches, (1) SL-B9 battery pack and USB-C cord - FDE	69456	US	YES

Size and Weight	Battery
6.55 cm; SL-B9: 74.8g // CR123A: 70.3g	(1) SL-B9 battery pack or (1) CR123A lithium



Safe Off feature prevents accidental activation; saves batteries

TLR-8[®] X

WHITE LIGHT ILLUMINATOR / RED LASER



Compact, multi-fuel rail-mounted light with red laser

- Features integrated 640-660nm red laser
- User interchangeable paddle switches
- Front loading batteries

LUMENS	500
CANDELA	5,000
DISTANCE	141m
RUN TIME SL-B9	1 hr
RUN TIME CR123A	1.5 hrs

Laser mode runs 36 hours (SL-B9)
Laser mode runs 60 hours (CR123A)



Safe Off feature prevents accidental activation; saves batteries

TLR-8[®] X G

WHITE LIGHT ILLUMINATOR / GREEN LASER



Compact, multi-fuel rail-mounted light with green laser

- Features integrated 510-530nm green laser
- User interchangeable paddle switches
- Front loading batteries

LUMENS	500
CANDELA	5,000
DISTANCE	141m
RUN TIME SL-B9	1 hr
RUN TIME CR123A	1.5 hrs

Laser mode runs 11 hours



Safe Off feature prevents accidental activation; saves batteries

Description	Item #
TLR-8 X – Includes high switch mounted on light plus low switch in package, (1) CR123A battery and key kit - Black	69414

Size and Weight	Battery
6.55 cm; CR123A: 74.8g // SL-B9: 77.7g	(1) SL-B9 battery pack or (1) CR123A lithium

Description	Item #
TLR-8 X G – Includes high switch mounted on light plus low switch in package, (1) CR123A battery and key kit - Black	69434

Size and Weight	Battery
6.55 cm; CR123A: 74.8g // SL-B9: 77.7g	(1) SL-B9 battery pack or (1) CR123A lithium

UPGRADED

TLR-7® X CONTOUR REMOTE

WHITE LIGHT ILLUMINATOR



Designed for one-handed shooting – ideal for dog handlers, SWAT teams, door breaching and close-quarter operations

- Rail grip clamp system lets you attach and remove quickly and securely — no tools needed, no hands near the muzzle
- Ambidextrous rear on/off switch; pressure-controlled grip switch provides momentary operation
- Front loading battery capability
- Cannot be retrofitted with existing TLR-7 X products

	SL-B9	CR123A
LUMENS	725	550
CANDELA	9,500	7,200
DISTANCE	195m	170m
RUN TIME	1 hr	1.5 hrs

Description	Item #	COO	TAA
TLR-7 X Contour Remote - for GLOCK® GEN 4 or GEN 5 models - Includes mounting key and (1) CR123A battery - Black	69428	US	YES
TLR-7 X Contour Remote - for SIG SAUER® P320® XCARRY frame - Includes Rail Locating Keys and (1) CR123A battery - Black	69480	US	YES

Size and Weight	Battery
11.68 cm; SL-B9: 80.7g // CR123A: 76.3g	(1) CR123A lithium or (1) SL-B9 battery pack



UPGRADED

TLR-7® X SUB

WHITE LIGHT ILLUMINATOR



Multi-fuel weapon light for subcompact handguns

- Ultra-compact and lightweight
- Fits on select railed subcompact pistols and includes interchangeable paddle switches
- SL-B9 battery pack recharges in 2.5 hours

	SL-B9	CR123A
LUMENS	725	550
CANDELA	7,700	5,000
DISTANCE	176m	141m
RUN TIME	1 hr	1.5 hrs

Description	Item #	COO	TAA
TLR-7 X sub (GLOCK® 43X/48 MOS 43X/48 Rail Models Only) - Includes mounting kit with key and (1) CR123A lithium battery - Black	69400	US	YES
TLR-7 X sub (SIG SAUER® P365/XL Closed Rail System) - Includes mounting kit with key and (1) CR123A lithium battery - Black	69401	US	YES
TLR-7 X sub (1913) - Includes mounting kit with key and (1) CR123A lithium battery - Black	69402	US	YES
TLR-7 X sub (1913OS) - Includes mounting kit with keys and (1) CR123A lithium battery - Black	69404	US	YES
TLR-7 X sub USB (GLOCK® 43X/48 MOS 43X/48 Rail Models Only) - Includes mounting kit with key and (1) SL-B9 battery pack - Black	69405	US	YES
TLR-7 X sub USB (SIG SAUER® P365/XL Closed Rail System) - Includes mounting kit with key and (1) SL-B9 battery pack - Black	69406	US	YES
TLR-7 X sub USB (1913) - Includes mounting kit with key and (1) SL-B9 battery pack - Black	69407	US	YES
TLR-7 X sub USB (1913OS) - Includes mounting kit with keys and (1) SL-B9 battery pack - Black	69408	US	YES

Size and Weight	Battery
6.38 cm; CR123A: 67.8g // SL-B9: 74.8g	(1) CR123A lithium or (1) SL-B9 battery pack



TLR-8® X SUB

WHITE LIGHT ILLUMINATOR / RED LASER



Multi-fuel gun light with red laser designed to fit select railed subcompact pistols

- Features integrated 640-660nm red laser
- User interchangeable rear paddle switches
- Front loading batteries

LUMENS	500
CANDELA	5,000
DISTANCE	141m
RUN TIME SL-B9	1 hr
RUN TIME CR123A	1.5 hrs

Laser mode runs 36 hours (SL-B9)
Laser mode runs 60 hours (CR123A)



Safe Off feature prevents accidental activation; saves batteries

Description	Item #
TLR-8 X sub (GLOCK® 43X/48 MOS 43X/48 Rail) - Includes mounting kit with key, multi-tool and (1) CR123A lithium battery - Black	69411
TLR-8 X sub (SIG SAUER® P365®/XL closed rail systems*) - Includes mounting kit with key, multi-tool and (1) CR123A lithium battery <i>*Does not fit the P365® XMACRO</i>	69417
TLR-8 X sub (1913) - Includes mounting kit with keys, multi-tool and (1) CR123A lithium battery - Black	69418
TLR-8 X sub (1913OS) - Includes mounting kit with key, multi-tool and (1) CR123A lithium battery - Black	69419

Size and Weight	Battery
6.38 cm; CR123A: 78.53g // SL-B9: 81.4g	(1) SL-B9 battery pack or (1) CR123A lithium

TLR-8® X G SUB

WHITE LIGHT ILLUMINATOR / GREEN LASER



Multi-fuel gun light with green laser designed to fit select railed subcompact pistols

- Features integrated 510-530nm green laser
- User interchangeable paddle switches
- Front loading batteries

LUMENS	500
CANDELA	5,000
DISTANCE	141m
RUN TIME SL-B9	1 hr
RUN TIME CR123A	1.5 hrs

Laser mode runs 11 hours

Description	Item #
TLR-8 X G sub (GLOCK® 43X/48 MOS 43X/48 Rail) - Includes mounting kit with key, multi-tool and (1) CR123A lithium battery	69431
TLR-8 X G sub (SIG SAUER® P365®/XL closed rail systems*) - Includes mounting kit with key, multi-tool and (1) CR123A lithium battery <i>*Does not fit the P365® XMACRO</i>	69437
TLR-8 X G sub (1913) - Includes mounting kit with keys, multi-tool and (1) CR123A lithium battery	69438
TLR-8 X G sub (1913OS) - Includes mounting kit with key, multi-tool and (1) CR123A lithium battery	69439

Size and Weight	Battery
6.38 cm; CR123A: 78.53g // SL-B9: 81.4g	(1) SL-B9 battery pack or (1) CR123A lithium



Safe Off feature prevents accidental activation; saves batteries



UPGRADED

TLR-7® HL-X SUB

WHITE LIGHT ILLUMINATOR



Multi-fuel, high-lumen tactical light

- Features a specialized clamp system
- Includes high and low paddle switches to match your shooting style

	SL-B9 DEFAULT	SL-B9 PROGRAMMABLE	CR123A
LUMENS	1,000	550	550
CANDELA	13,000	7,300	7,300
DISTANCE	228m	171m	171m
RUN TIME	30 min	1 hr	1.5 hrs



Safe Off feature prevents accidental activation; saves batteries

Description	Item #	COO	TAA
TLR-7 HL-X sub USB (GLOCK® 43X/48 MOS 43X/48 Rail) - Includes mounting kit with key, multi-tool and (1) SL-B9 battery pack and USB-C cord - Black	69503	US	YES
TLR-7 HL-X sub USB (SIG SAUER® P365®/XL closed rail systems*) - Includes mounting kit with key, multi-tool and (1) SL-B9 battery pack and USB-C cord - Black *Does not fit the P365® XMACRO	69504	US	YES
TLR-7 HL-X sub USB (1913) - Includes mounting kit with key, multi-tool and (1) SL-B9 battery pack and USB-C cord - Black	69505	US	YES
TLR-7 HL-X sub USB (1913OS) - Includes mounting kit with key, multi-tool and (1) SL-B9 battery pack and USB-C cord - Black	69506	US	YES

Size and Weight	Battery
6.38 cm; SL-B9: 70.6g // CR123A: 67.8g	(1) SL-B9 battery or (1) CR123A lithium battery

UPGRADED

TLR-7® HL-X USB

WHITE LIGHT ILLUMINATOR



High-lumen, high-candela, multi-fuel tactical light

- Facecap engineered to produce a longer reaching, tighter beam
- User-interchangeable switches to accommodate your shooting style
- User-programmable output modes
- Front loading batteries

Description	Item #
TLR-7 HL-X USB – Includes high and low paddle switches, Rail Locating Keys, (1) SL-B9 battery pack and USB-C cord - Black	69458
TLR-7 HL-X USB – Includes high and low paddle switches, Rail Locating Keys, (1) SL-B9 battery pack and USB-C cord - FDE	69459

Size and Weight	Battery
7.37 cm; SL-B9: 81.6g // CR123A: 79.4g	(1) SL-B9 battery pack or CR123A lithium battery

	SL-B9 DEFAULT	SL-B9 PROGRAMMABLE	CR123A
LUMENS	1,100	550	550
CANDELA	23,000	11,000	11,000
DISTANCE	303m	210m	210m
RUN TIME	30 min	1 hr	1.5 hrs



Safe Off feature prevents accidental activation; saves batteries

TLR-8® HL-X

WHITE LIGHT ILLUMINATOR / RED LASER



Rechargeable, high-lumen, multi-fuel tactical light with 640-660nm red laser

- Facecap engineered to produce a longer reaching, tighter beam
- User interchangeable paddle switches to accommodate your shooting style
- User-programmable output modes
- Front loading batteries

	SL-B9 DEFAULT	SL-B9 PROGRAMMABLE	CR123A
LUMENS	1,000	500	500
CANDELA	22,000	11,000	11,000
DISTANCE	297m	210m	210m
RUN TIME	30 min	1 hr	1.5 hrs

Laser mode runs 29 hours



Safe Off feature prevents accidental activation; saves batteries

Description

Item

TLR-8 HL-X USB – Includes mounting kit with key, multi-tool, (1) SL-B9 battery pack and USB-C cord - Black

69465

Size and Weight

Battery

7.37 cm; SL-B9: 89g //

(1) SL-B9 battery pack or
(1) CR123A lithium battery

TLR-8® HL-X G

WHITE LIGHT ILLUMINATOR / GREEN LASER



Rechargeable, high-lumen, multi-fuel tactical light with 510-530nm green laser

- Facecap engineered to produce a longer reaching, tighter beam
- Includes rear paddle switches to accommodate your shooting style
- User-programmable output modes
- Front loading batteries

	SL-B9 DEFAULT	SL-B9 PROGRAMMABLE	CR123A
LUMENS	1,000	500	500
CANDELA	22,000	11,000	11,000
DISTANCE	297m	210m	210m
RUN TIME	30 min	1 hr	1.5 hrs

Laser mode runs 10 hours

Description

Item

TLR-8 HL-X G USB – Includes mounting kit with key, multi-tool, (1) SL-B9 battery pack and USB-C cord - Black

69475

Size and Weight

Battery

7.37 cm; SL-B9: 89g //

(1) SL-B9 battery pack or
(1) CR123A lithium battery



Safe Off feature prevents accidental activation; saves batteries



TLR-8® HL-X SUB

WHITE LIGHT ILLUMINATOR / RED LASER

Multi-fuel, high-lumen tactical light

- Features a specialized clamp system
- Includes high and low paddle switches to match your shooting style

Description	Item #
TLR-8 HL-X sub USB (GLOCK® 43X/48 MOS 43X/48 Rail) - Includes mounting kit with key, multi-tool, (1) SL-B9 battery pack and USB-C cord - Black	69466
TLR-8 HL-X sub USB (SIG SAUER® P365®/XL closed rail systems*) - Includes mounting kit with key, multi-tool and (1) SL-B9 battery pack and USB-C cord - Black *Does not fit the P365® XMACRO	69467
TLR-8 HL-X sub USB (1913) - Includes mounting kit with key, multi-tool, (1) SL-B9 battery pack and USB-C cord - Black	69468
TLR-8 HL-X sub USB (1913OS) - Includes mounting kit with key, multi-tool, (1) SL-B9 battery pack and USB-C cord - Black	69469

Size and Weight	Battery
6.38 cm; SL-B9: 81.4g //	(1) SL-B9 battery pack or
CR123A: 78.5g	(1) CR123A lithium battery



	SL-B9 DEFAULT	SL-B9 PROGRAMMABLE	CR123A
LUMENS	1,000	500	500
CANDELA	10,000	5,000	5,000
DISTANCE	200m	141m	141m
RUN TIME	30 min	1 hr	1.5 hrs

Laser mode run 29 hours



Safe Off feature prevents accidental activation; saves batteries

TLR-8® HL-X G SUB

WHITE LIGHT ILLUMINATOR / GREEN LASER

Multi-fuel, high-lumen tactical light

- Features a specialized clamp system
- Includes high and low paddle switches to match your shooting style

Description	Item #
TLR-8 HL-X G sub USB (GLOCK® 43X/48 MOS 43X/48 Rail) - Includes mounting kit with key, multi-tool, (1) SL-B9 battery pack and USB-C cord - Black	69476
TLR-8 HL-X G sub USB (SIG SAUER® P365®/XL closed rail systems*) - Includes mounting kit with key, multi-tool and (1) SL-B9 battery pack and USB-C cord - Black *Does not fit the P365® XMACRO	69477
TLR-8 HL-X G sub USB (1913) - Includes mounting kit with key, multi-tool, (1) SL-B9 rechargeable battery pack and USB-C cord - Black	69478
TLR-8 HL-X G sub USB (1913OS) - Includes mounting kit with key, multi-tool, (1) SL-B9 battery pack and USB-C cord - Black	69479

Size and Weight	Battery
6.38 cm; SL-B9: 81.4g //	(1) SL-B9 battery pack or
CR123A: 78.5g	(1) CR123A lithium battery



	SL-B9 DEFAULT	SL-B9 PROGRAMMABLE	CR123A
LUMENS	1,000	500	500
CANDELA	10,000	5,000	5,000
DISTANCE	200m	141m	141m
RUN TIME	30 min	1 hr	1.5 hrs

Laser mode run 10 hours



Safe Off feature prevents accidental activation; saves batteries

TLR-9®

WHITE LIGHT ILLUMINATOR



Slim designed, rail-mounted light that rapidly attach/detaches from full frame weapons

- Produces a concentrated beam with optimum peripheral illumination
- Rail grip clamp securely attaches/detaches without putting your hands in front of the muzzle
- User interchangeable paddle switches
- Front loading batteries

LUMENS	1,000
CANDELA	10,000
DISTANCE	200m
RUN TIME	1.5 hrs

Strobe runs 3 hours



Safe Off feature prevents accidental activation; saves batteries

Description	Item #	COO	TAA
TLR-9 - Includes Rail Locating Keys and (2) CR123A lithium batteries with high/low switches - Black	69464	US	YES

Size and Weight	Battery
9.83 cm; 120.8g	(2) CR123A lithium

TLR-10®

WHITE LIGHT ILLUMINATOR / RED LASER



Rail-mounted light with 640-660nm red laser that rapidly attaches/detaches from full frame weapons

- Fits on select railed subcompact pistols
- User interchangeable rear paddle switches
- Front loading batteries

LUMENS	1,000
CANDELA	10,000
DISTANCE	200m
RUN TIME	1.5 hrs

Laser mode runs 60 hours



Safe Off feature prevents accidental activation; saves batteries

Description	Item #	COO	TAA
TLR-10 - Includes high switch (mounted), low switch, (2) CR123A lithium batteries and key kit - Black	69470	US	YES

Size and Weight	Battery
9.82 cm; 131g	(2) CR123A lithium

TLR-10® G

WHITE LIGHT ILLUMINATOR / GREEN LASER



Rail-mounted light with green laser that rapidly attaches/detaches from full frame weapons

- Features a white LED and 510-530nm green laser
- Front-loading battery capability
- User interchangeable paddle switches

LUMENS	1,000
CANDELA	10,000
DISTANCE	200m
RUN TIME	1.5 hrs

Laser mode runs 11 hours



Safe Off feature prevents accidental activation; saves batteries

Description	Item #	COO	TAA
TLR-10 G - Includes high switch (mounted), low switch, (2) CR123A lithium batteries and key kit - Black	69473	US	YES

Size and Weight	Battery
9.82 cm; 131g	(2) CR123A lithium



MULTI-FUEL HAND GUN SERIES



TLR-1 HL®-X

Rapid battery
replacement.



TLR-7® HL-X



Made for situations when failure is not worth contemplating, Streamlight® has created the broadest range of **professional torches and lighting tools** that can be trusted for a lifetime. streamlight.com



TLR-VIR® II

WHITE LIGHT/ IR/ IR LASER COMBO ILLUMINATOR



White LED weapon light with infrared LED and laser options

- Two lighting modes available
- IR requires night vision goggles
- Windage and elevation adjustment screws with tactile indication
- Securely fits M17/M18 pistols and all long guns with MIL-STD-1913 rails

LUMENS	300
CANDELA	5,000
DISTANCE	600mW/sr
VISIBLE RUN TIME	1.5 hrs
IR RUN TIME	12 hrs



Description	Item #	NSN/MCN #	COO	TAA
TLR-VIR II - Visible LED/IR Illuminator/IR Laser - Includes Rail Locating Keys and CR123A lithium battery - Coyote	69191	5855-01-688-6850	US	YES
TLR-VIR II - Visible LED/IR Illuminator/IR Laser - Includes Rail Locating Keys and CR123A lithium battery - Black	69192	5855-01-689-3350	US	YES

Size and Weight	Battery
8.39 cm; 108g	(1) CR123A lithium

SPEEDLOCKER®

Portable, locking storage container that provides you with swift and direct access

- Patented mechanical keypad with 31 user selectable combinations; requires no batteries
- Rugged, water-resistant construction with convenient carry handle
- Accommodates various fire arms
- Air travel suitable with supplied padlock

Description	Item #
SpeedLocker - Includes padlock and Allen Key	59000
Padlock with 3 keys	59001
91.44 cm Security Cable	59002

Size and Weight
Internal: 20.3 x 18 cm // External: 31.5 x 20.8 x 7.1 cm; 1.2 kg

Notice: The SpeedLocker® is not an approved firearm safe. It is the user's responsibility to determine the suitability for the specific situation and need.



STREAMLIGHT

SPEEDLOCKER®

PERSONAL, PORTABLE STORAGE | AIR TRAVEL
SUITABLE WITH SUPPLIED PADLOCK | CONVENIENT
CARRY HANDLE

A large, high-quality photograph of the SpeedLocker unit. The unit is a rugged, black plastic container with a textured front panel. It is positioned diagonally, resting on a brown, textured tactical bag or gear. The background is dark and out of focus, emphasizing the product. The Streamlight logo is visible on the top left of the unit's front panel, and the SpeedLocker model name is embossed on the lower part of the front panel. The overall aesthetic is professional and emphasizes the product's durability and portability.



TLR-1 HPL®

WHITE LIGHT ILLUMINATOR



IPX7

High-candela, long-range, rail-mounted tactical light that produces an intensely bright, far-reaching wide beam

- Deep dish parabolic reflector produces long-range targeting beam with optimum peripheral illumination
- Available with either standard door switch or remote door switch

LUMENS	1,000
CANDELA	60,000
DISTANCE	490m
RUN TIME	1.5 hrs



Description	Item #	COO	TAA
TLR-1 HPL Standard Switch - Includes Rail Locating Keys and (2) CR123A lithium batteries - Black	69215	US	YES
TLR-1 HPL Remote Switch - Includes Rail Locating Keys, remote switch, door switch and (2) CR123A lithium batteries - Black	69216	US	YES
TLR-1 HPL Long Gun Kit - Includes "safe off" remote door switch, remote pressure switch, mounting clips, standard door switch and (2) CR123A lithium batteries - Black	69219	US	YES

Size and Weight	Battery
12.27 cm; 158.8g // With Remote: 13.34 cm; 167.3g	(2) CR123A lithium batteries

TL-RACKER®



All-in-one integrated shotgun forend light that reduces snag by eliminating the need for remote cords

- Ideal for shotgun breaching and close-quarter operations
- Ease of access with momentary and constant on modes
- Elongated switch pad accommodates virtually any hand size



Models available for Mossberg 500®/590® and Remington 870™

LUMENS	1,000
CANDELA	20,000
DISTANCE	283m
RUN TIME	1.5 hrs



Description	Item #	COO	TAA
TL-Racker - Mossberg 500/590 - Includes (2) CR123A lithium batteries - Black	69600	US	YES
TL Racker - Remington 870 - Includes (2) CR123A lithium batteries - Black	69601	US	YES
TL Racker - Mossberg 590 Shockwave with strap - Includes (2) CR123A lithium batteries - Black	69602	US	YES
TL Racker - Mossberg 500/590 - Includes (2) CR123A lithium batteries - Orange	69610	US	YES
TL Racker - Remington 870 - Includes (2) CR123A lithium batteries - Orange	69611	US	YES
TL-Racker Forend Wrench	69603	US	YES

Note: For TL Rackers #69610 and #69611, orange designed for less lethal options

Size and Weight	Battery
20.32 cm; 343g	(2) CR123A lithium



TLR[®] RM 1 HL-X

COMPACT RAIL MOUNTED LIGHTING SYSTEM



Lightweight and compact, multi-fuel TLR light

- Designed to provide increased candela while maintaining lumen output
- Independently operating push-button and remote pressure switches
- System is packaged as a kit

	SL-B9	CR123A
LUMENS	1,000	500
CANDELA	22,000	11,000
DISTANCE	297m	210m
RUN TIME	30 min	1.5 hrs



Safe Off feature prevents accidental activation; saves batteries

Description	Item #	COO	TAA
TLR RM 1 HL-X USB - System - Includes straight momentary pressure switch, key kit, USB-C cord and (1) SL-B9 battery pack - Black	69483	US	YES
TLR RM 1 HL-X USB - Light Only - Includes key kit, (1) SL-B9 battery pack & USB-C cord - Black	69484	US	YES

Size and Weight	Battery
9.25 cm; SL-B9: 88.5g //	(1) SL-B9 battery pack or
CR123A: 85.6g	(1) CR123A lithium battery



Optional M-LOK[®] mount sold separately

TLR[®] RM 1

COMPACT RAIL MOUNTED LIGHTING SYSTEM



Compact light, built for long guns, delivering a powerful, far-reaching beam without sacrificing lumens

- Designed to provide increased candela while maintaining high-lumen output
- Independently operating push-button and remote pressure switches
- System is packaged as a kit

LUMENS	500
CANDELA	11,000
DISTANCE	210m
RUN TIME	1.5 hrs
Strobe runs 3 hours	



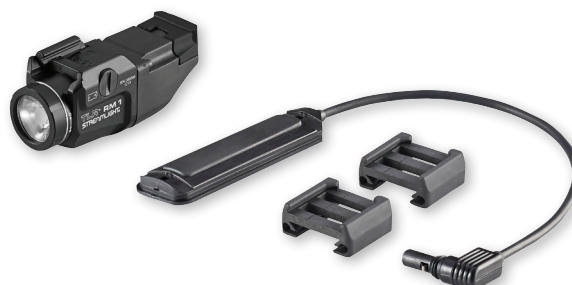
Safe Off feature prevents accidental activation; saves batteries



Optional M-LOK[®] mount sold separately

Description	Item #	COO	TAA
TLR RM 1 - System - Includes remote door switch, remote pressure switch, mounting clips & (1) CR123A lithium battery - Black <i>(image shown to the right)</i>	69440	US	YES
TLR RM 1 - Light Only - Includes key kit and (1) CR123A lithium battery - Black	69441	US	YES
TLR RM 1 - with Dual Remote Switch - Black	69442	---	---

Size and Weight	Battery
9.25 cm; 85.6g	(1) CR123A lithium





TLR[®] RM 2

COMPACT RAIL MOUNTED LIGHTING SYSTEM

Rail mounted light delivers superior performance with a focused long-range, high-candela beam all while sustaining a powerful lumen output

- Independently operating push-button and remote pressure switches
- System is packaged as a kit

LUMENS	1,000
CANDELA	22,000
DISTANCE	297m
RUN TIME	1.5 hrs
Strobe runs 3 hours	

Description	Item #	COO	TAA
TLR RM 2 - System - Includes remote pressure switch, mounting clips and (2) CR123A lithium batteries - Black <i>(image shown to the right)</i>	69450	US	YES
TLR RM 2 - Light Only - Includes (2) CR123A lithium batteries - Black	69451	US	YES

Size and Weight	Battery
12.6 cm; 132.7g	(2) CR123A lithium



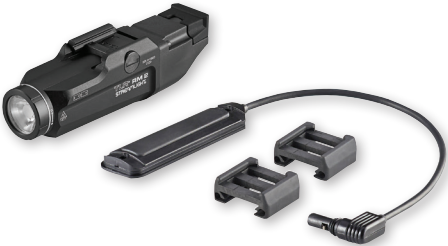
IPX7



Safe Off feature prevents accidental activation; saves batteries



Optional M-LOK[®] mount sold separately



TLR® RM 1 LASER

WHITE LIGHT ILLUMINATOR / RED LASER

Designed for long guns, this compact light projects a far-reaching, high-candela beam - without compromising overall lumen output

- Independently operating push-button and remote pressure switches
- System is packaged as a kit with front loading batteries
- 640-660nm red laser

LUMENS	500
CANDELA	11,000
DISTANCE	210m
RUN TIME	1.5 hrs

Strobe runs 3 hours
Laser runs 60 hours

Description	Item #	COO	TAA
TLR RM 1 Laser - System - Includes remote pressure switch, mounting clips, (1) CR123A lithium battery - Black <i>(image shown to the right)</i>	69445	US	YES
TLR RM 1 Laser - Light Only - Includes key kit and (1) CR123A lithium battery - Black	69446	US	YES

Size and Weight	Battery
9.25 cm; 91.9g	(1) CR123A lithium



IPX4



Safe Off feature prevents accidental activation; saves batteries



Optional M-LOK® mount sold separately



TLR® RM 2 LASER

WHITE LIGHT ILLUMINATOR / RED LASER

Long-range, focused, high-candela light with 640-660nm red laser - all while sustaining a powerful lumen output

- Independently operating push-button and remote pressure switches
- System is packaged as a kit
- Front loading batteries

LUMENS	1,000
CANDELA	22,000
DISTANCE	297m
RUN TIME	1.5 hrs

Strobe runs 3 hours
Laser runs 60 hours

Description	Item #	COO	TAA
TLR RM 2 Laser - System - Includes remote pressure switch, mounting clips and (2) CR123A lithium batteries - Black <i>(image shown to the right)</i>	69447	US	YES
TLR RM 2 Laser - Light Only - Includes key kit and (2) CR123A lithium batteries - Black	69448	US	YES

Size and Weight	Battery
12.6 cm; 144.7g	(2) CR123A lithium



IPX4



Safe Off feature prevents accidental activation; saves batteries



Optional M-LOK® mount sold separately



TLR® RM 1 LASER-G

WHITE LIGHT ILLUMINATOR / GREEN LASER

Low-profile long gun light featuring a longer reaching, tighter beam and green laser

- Designed to provide increased candela while maintaining lumen output
- Independently operating push-button and remote pressure switches
- System is packaged as a kit

LUMENS	500
CANDELA	11,000
DISTANCE	210m
RUN TIME	1.5 hrs
Strobe runs 3 hours	
Laser runs 11 hours	

Description	Item #	COO	TAA
TLR RM 1 Laser-G - System - Includes remote pressure switch, mounting clips, (1) CR123A lithium battery - Black <i>(image shown to the right)</i>	69443	US	YES
TLR RM 1 Laser-G - Light Only - Includes key kit and (1) CR123A lithium battery - Black	69444	US	YES

Size and Weight	Battery
9.25 cm; 91.9g	(1) CR123A lithium



Safe Off feature prevents accidental activation; saves batteries



Optional M-LOK® mount sold separately

TLR® RM 2 LASER-G

WHITE LIGHT ILLUMINATOR / GREEN LASER

Larger rail mount light with longer-reaching, tighter beam and even greater candela production, all while maintaining high-lumen output

- Designed to provide increased candela while maintaining lumen output
- Independently operating push-button and remote pressure switches
- System is packaged as a kit

LUMENS	1,000
CANDELA	22,000
DISTANCE	297m
RUN TIME	1.5 hrs
Strobe runs 3 hours	
Laser runs 11 hours	

Description	Item #	COO	TAA
TLR RM 2 Laser-G - System - Includes remote pressure switch, mounting clips, (2) CR123A lithium batteries - Black <i>(image shown to the right)</i>	69453	US	YES
TLR RM 2 Laser-G - Light Only - Includes key kit and (2) CR123A lithium batteries - Black	69454	US	YES

Size and Weight	Battery
12.6 cm; 144.7g	(2) CR123A lithium



Safe Off feature prevents accidental activation; saves batteries



Optional M-LOK® mount sold separately

TLR® ACCESSORIES

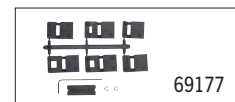
	ITEM #	TLR-1 HL-X TLR-1 HP-X	TLR-1 HP TLR-1 HL TLR-2 HL	TLR-2 G TLR-2 HL G	TLR-1 TLR-1s	TLR-2 TLR-2s	TLR-3X	TLR- VIR II	TLR-6	TLR-6 HL TLR-6 HL G	TLR-7 X USB	TLR-7 HL-X USB
Ambidextrous Vertical Grip with Rail	69114	✓	✓	✓	✓	✓						
TLR 12 ga. Mag Mount Mag Tube/Mossberg Rail	69901	✓	✓	✓	✓	✓	✓				✓	✓
Remington 870 Mount	69906	✓	✓	✓	✓	✓	✓				✓	✓
TLR-1 and TLR-2 Key Kit	69175		✓	✓	✓	✓						
TLR-7 X/TLR-8 X/TLR-9/TLR-10 Key Kit	69177										✓	✓
TLR-1 HL-X Key Kit	69178	✓										
TLR M-LOK® Mount	88301	✓	✓	✓	✓	✓						
Contour Remote - GLOCK®	69300		✓	✓	✓	✓						
Contour Remote - M&P®	69310		✓	✓	✓	✓						
Contour Remote - SIG SAUER® P320®	69481		✓	✓	✓	✓						
TLR-1/TLR-2 Remote Door Switch	69130		✓	✓	✓	✓						
Door Switch with Safe Off	69161		✓	✓	✓	✓						
Tail Switch Kit TLR-7 X and TLR-9	69490										✓	✓
Tail Switch Kit TLR-8 X/TLR-8 X G/TLR-10/TLR-10 G	69491											
Tail Switch Kit TLR-7 X sub	69492											
Tail Switch Kit TLR-8 X sub/TLR-8 X G sub	69493											
Tape Switch	69132		✓	✓	✓	✓						
Coil Pressure Switch	69134		✓	✓	✓	✓						
Straight Momentary Pressure Switch	69135		✓	✓	✓	✓						
Straight Latching Pressure Switch	89008		✓	✓	✓	✓						
Dual Remote Switch	69138		✓	✓	✓	✓						
Remote Retaining Clips	88178		✓	✓	✓	✓		✓				
Red Flip Lens	69115	✓	✓	✓	✓	✓		✓				
Blue Flip Lens	69116	✓	✓	✓	✓	✓		✓				
Green Flip Lens	69117	✓	✓	✓	✓	✓		✓				
IR Flip Lens	69118	✓	✓	✓	✓	✓		✓				
Opaque Flip Lens	69124	✓	✓	✓	✓	✓		✓				
CR123A Batteries - 2pk	85175	✓	✓	✓	✓	✓	✓	✓			✓	✓
CR123A Batteries - 8pk	85180	✓	✓	✓	✓	✓	✓	✓			✓	✓
CR123A Batteries - 12pk	85177	✓	✓	✓	✓	✓	✓	✓			✓	✓
CR123A Batteries - 400pk	85179	✓	✓	✓	✓	✓	✓	✓			✓	✓
CR1/3N Batteries - 2pk	69271								✓			
CR1/3N Batteries - 12pk	69281								✓			
SL-B9 Battery Pack - 2pk	20237	✓					✓				✓	✓
SL-B2 Battery - 2pk	22121									✓		
SL-B2 Charging Case	22120									✓		



TLR-8 HL-X TLR-8 HL-X G	TLR-8 X TLR-8 X G	TLR-7 X SUB	TLR-8 X SUB TLR-8 X G SUB	TLR-7 HL-X SUB TLR-8 HL-X SUB TLR-8 HL-X G SUB	TLR-7 X CONTOUR REMOTE	TLR-9	TLR-10 TLR-10 G	TLR RM 1 HL-X USB	TLR RM 1 TLR RM-2 SERIES	TLR-1 HPL
										✓
	✓					✓	✓			✓
	✓					✓	✓			✓
										✓
	✓					✓	✓	✓	✓	
								✓	✓	✓
										✓
										✓
✓	✓					✓	✓			
		✓		✓ (TLR-7 HL-X subs)						
			✓	✓ (TLR-8 HL-X subs)						
										✓
										✓
								✓	✓	✓
								✓	✓	✓
								✓	✓	✓
						✓	✓	✓	✓	✓
✓	✓	✓	✓	✓	✓	✓	✓	✓	✓	✓
✓	✓	✓	✓	✓	✓	✓	✓	✓	✓	✓
✓	✓	✓	✓	✓	✓	✓	✓	✓	✓	✓
✓	✓	✓	✓	✓	✓	✓	✓	✓	✓	✓
✓	✓	✓	✓	✓	✓			✓		



69175



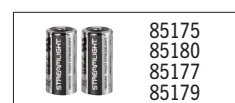
69177



69178



69115 69117
69116 69118



85175
85180
85177
85179



69490



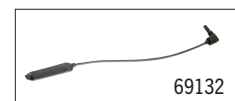
69491



69493



69492



69132



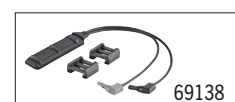
69134



69135



89008



69138



69130



20237, 20238,
20239



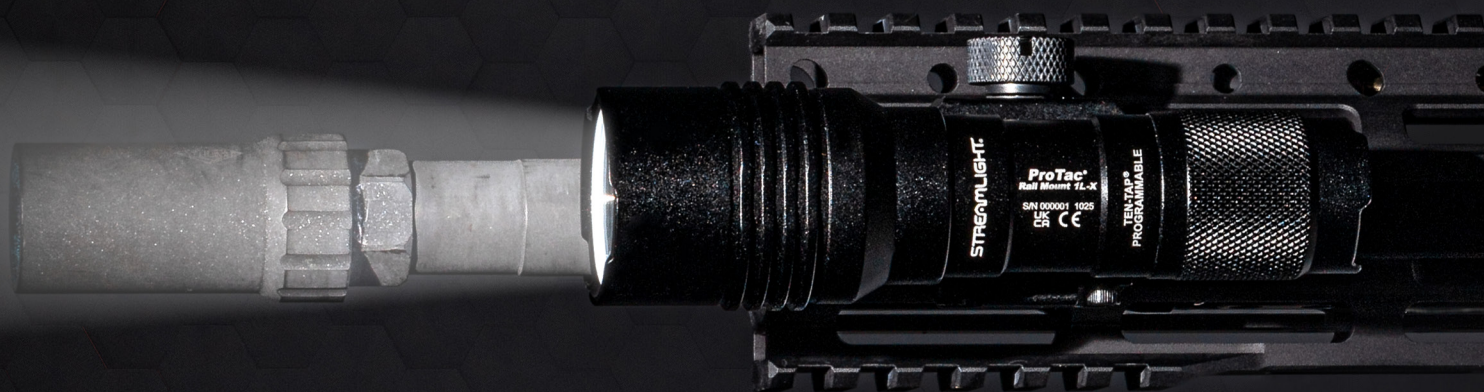
22121



22120



69271 and
69281



NEW

PROTAC® RAIL MOUNT 1L-X



IP67

NEW

// PROTAC® RAIL MOUNT 1L-X PRO



IP54

With Remote Pressure Switch installed



IP67

With Standard button switch installed

Compact, multi-fuel, high-output tactical light designed for short-barreled rifles, carbines, and submachine guns available in two models

- **1L-X Pro:** Jack-Cap® tailcap switch that offers operational switch redundancy with push-button operation or remote pressure switch operation
- **1L-X:** Uses a standard push button tail switch (as seen in image to the right) for ease of activation without a pressure pad
- TEN-TAP® Programmable
- MIL-STD-1913 Picatinny rail and M-LOK® mounts included



SL-B9	HIGH	LOW
LUMENS	850	100
CANDELA	30,000	3,400
DISTANCE	346m	117m
RUN TIME	0.5 hrs	4.5 hrs
Strobe runs 1.25 hours		

CR123A	HIGH	LOW
LUMENS	500	100
CANDELA	18,000	3,400
DISTANCE	268m	117m
RUN TIME	1.75 hrs	6.5 hrs
Strobe runs 2.5 hours		



Description	Item #
ProTac Rail Mount 1L-X - Includes tailcap switch, mounting hardware, M-LOK® mount and (1) CR123A lithium battery - Black	89026
ProTac Rail Mount 1L-X USB - Includes tailcap switch, mounting hardware, M-LOK® mount and (1) SL-B9 battery pack and USB cord - Black	89027

Description	Item #
ProTac Rail Mount 1L-X Pro - Includes Jack Cap®, M-LOK® Kit, Momentary Switch, Hardware Kit, 2.5 mm Allen Wrench, (1) CR123A lithium battery - Black	89024
ProTac Rail Mount 1L-X USB Pro - Includes Jack Cap®, M-LOK® Kit, Momentary Switch, Hardware Kit, 2.5 mm Allen Wrench, (1) SL-B9 battery pack and USB cord - Black	89025

Size and Weight

11.79 cm; CR123A: 155.9g // SL-B9: 158.8g

Battery

(1) CR123A lithium or (1) SL-B9 battery pack

PROTAC® RAIL MOUNT 1

Long gun light featuring a fixed mount for MIL-STD-1913 (Picatinny) rails or M-LOK® mount

- Uses either a remote switch with momentary/constant on operation or a standard push-button tail switch
- Multi-fuel; uses either a lithium or alkaline battery
- TEN-TAP® Programmable



IPX4

With Remote
Pressure Switch
installed



IPX7

With Standard
button switch
installed

CR123A	HIGH	LOW
LUMENS	350	40
CANDELA	12,000	1,380
DISTANCE	219m	19m
RUN TIME	1.75 hrs	14.5 hrs
Strobe runs 3 hours		

ALKALINE	HIGH	LOW
LUMENS	150	40
CANDELA	4,950	1,380
DISTANCE	141m	19m
RUN TIME	1.5 hrs	8 hrs
Strobe runs 2.75 hours		



Description

ProTac Rail Mount 1 - Includes remote pressure switch, tailcap switch, mounting hardware, M-LOK® mount, (1) AA alkaline battery and (1) CR123A lithium battery - Black

Item

88058

M-LOK® is a registered trademark of Magpul Industries Corp.

Size and Weight

10.8 cm; CR123A: 121.9g //
Alkaline: 127.57g

Battery

(1) CR123A lithium or
(1) AA alkaline

PROTAC® RAIL MOUNT 2

Lightweight, rugged long gun light equipped with a fixed mount compatible with MIL-STD 1913 Picatinny rails or M-LOK® mount for flexible installment operations

- Uses either a remote switch with momentary/constant on operation or a standard push-button tail switch
- TEN-TAP® Programmable



IPX4

With Remote
Pressure Switch
installed



IPX7

With Standard
button switch
installed

	HIGH	LOW
LUMENS	625	60
CANDELA	22,000	2,000
DISTANCE	297m	89m
RUN TIME	2 hrs	21 hrs
Strobe runs 2.75 hours		



Description

ProTac Rail Mount 2 - Includes remote switch, tail switch, remote retaining clips, M-LOK® mount, mounting hardware, and (2) CR123A lithium batteries - Black

Item

88059

Size and Weight

12.7 cm; 141.7g

Battery

(2) CR123A lithium batteries

PROTAC® RAIL MOUNT HL-X

High-lumen long gun light featuring a fixed mount for MIL-STD-1913 Picatinny rails or with M-LOK® mount allowing for alternative mounting options

- Uses either a remote switch with momentary/constant on operation or a standard push-button tail switch
- TEN-TAP® Programmable

	HIGH	LOW
LUMENS	1,000	60
CANDELA	50,000	3,100
DISTANCE	447m	111m
RUN TIME CR123A	1.25 hrs	21 hrs
RUN TIME SL-B26	1.75 hrs	24 hrs

Strobe runs 2.5 hours (CR123A) // 3.5 hours (SL-B26)

Description	Item #
ProTac Rail Mount HL-X - Includes remote pressure switch, tailcap switch, mounting hardware, M-LOK® mount and (2) CR123A lithium batteries - Black	88066
ProTac Rail Mount HL-X USB - Includes remote switch, tail switch, remote retaining clips mounting hardware, M-LOK® mount, (1) SL-B26 battery pack and USB cord - Black	88071

M-LOK® is a registered trademark of Magpul Industries Corp.



IP54

With Remote Pressure Switch installed



IP67

With Standard button switch installed



Size and Weight

13.8 cm; CR123A: 181.4g // SL-B26: 195.6g

Battery

(2) CR123A lithium or (1) SL-B26 battery pack

PROTAC® RAIL MOUNT HL-X PRO

Long range, low-profile, long gun light with a Jack-Cap® tailcap (as seen in image below) switch that offers operational switch redundancy

- Uses either a remote switch with momentary/constant on operation or a standard push-button tail switch
- MIL-STD-1913 or M-LOK® compatible rails
- TEN-TAP® Programmable



	HIGH	LOW
LUMENS	1,000	60
CANDELA	50,000	3,100
DISTANCE	447m	111m
RUN TIME CR123A	1.25 hrs	21 hrs
RUN TIME SL-B26	1.75 hrs	24 hrs

Strobe runs 2.5 hours (CR123A) // 3.5 hours (SL-B26)

Description	Item #
ProTac Rail Mount HL-X Pro - Includes Jack-Cap®, momentary remote switch, remote retaining clips, mounting hardware, M-LOK® mount and (2) CR123A lithium batteries - Black	88126
ProTac Rail Mount HL-X Pro USB - Includes Jack-Cap®, M-LOK® kit, momentary switch, hardware kit, 2.5 mm Allen Wrench, (1) SL-B26 battery pack and USB cord - Black	88127
ProTac Rail Mount HL-X Pro - Light Only - Includes Jack-Cap®, M-LOK® mount and (2) CR123A lithium batteries - Black	88128
ProTac Rail Mount HL-X Pro USB - Light Only - Includes Jack-Cap®, M-LOK® mount, (1) SL-B26 battery pack and USB cord - Black	88129

Size and Weight	Battery
13.8 cm; CR123A: 187.1g // SL-B26: 204.1g	(2) CR123A lithium or (1) SL-B26 battery pack



IP54

With Remote Pressure Switch installed



IP67

With Standard button switch installed



PROTAC® RAIL MOUNT HL-X LASER



High-lumen long gun light with integrated red aiming laser with windage and elevation adjustments

- Unique functionality with its double switches; push button tailcap or remote pressure switch
- Multi-fuel innovation; available as USB rechargeable system or lithium battery version
- Rail grabber is separate from light so you can rotate it within the clamp and maintain windage and elevation settings
- TEN-TAP® Programmable

	HIGH	LOW
LUMENS	1,000	60
CANDELA	18,200	1,100
DISTANCE	270m	66m
RUN TIME CR123A	1.25 hrs	20 hrs
RUN TIME SL-B26	1.5 hrs	23 hrs

Strobe runs 2.5 hrs (CR123A) // 3.25 hrs (SL-B26)

Description	Item #
ProTac Rail Mount HL-X Laser - Includes remote pressure switch, tailcap switch, remote retaining clips, mounting hardware and (2) CR123A lithium batteries - Black	88089
ProTac Rail Mount HL-X Laser USB - Includes remote pressure switch, tailcap switch, remote retaining clips, mounting hardware and (1) SL-B26 battery pack and USB cord - Black	88090

Size and Weight	Battery
16.7 cm; SL-B26: 306g // CR123A: 292g	(2) CR123A lithium or (1) SL-B26 battery pack



PROTAC® RAIL MOUNT HP-X PRO



IPX4

With Remote Pressure Switch installed



IPX7

With Standard button switch installed

Long range, high-candela long gun light with Jack-Cap® switch

- Jack-Cap® tailcap switch (as shown in the image below) offers operational switch redundancy with both push-button operation or remote pressure switch operation
- Fits long guns with MIL-STD-1913 rails (optional M-LOK® mount included)



Description	Item #
ProTac Rail Mount HP-X Pro - System - Includes Jack-Cap tail cap switch, M-LOK mount, mounting hardware, Allen wrench, straight momentary pressure switch and (2) CR123A lithium batteries	89015
ProTac Rail Mount HP-X Pro USB - System - Includes Jack-Cap tail cap switch, M-LOK® mount, mounting hardware, Allen wrench, straight momentary pressure switch, (1) SL-B26 battery pack and USB-C cord - Black	89016
ProTac Rail Mount HP-X Pro - Light Only - Includes Jack-Cap tail cap switch, M-LOK mount, Allen wrench and (2) CR123A lithium batteries - Black	89017
ProTac Rail Mount HP-X Pro USB - Light Only - Includes Jack-Cap tailcap switch, M-LOK mount, Allen wrench, (1) SL-B26 battery pack and USB cord - Black	89018

Size and Weight	Battery
14.3 cm; SL-B26: 198g // CR123A: 181g	(1) SL-B26 battery pack or (2) CR123A lithium batteries

	HIGH	LOW
LUMENS	800	55
CANDELA	105,000	7,600
DISTANCE	648m	174m
RUN TIME SL-B26	2 hrs	26 hrs
RUN TIME CR123A	1.5 hrs	18 hrs

Strobe runs 2.5 hrs (CR123A) // 3.5 hrs (SL-B26)





NEW

PROTAC® 2.0 RAIL MOUNT HP

IP67

High-performance tactical light offers a perfect blend of 2,000 lumens and 85,000 candela

- Powered by our proprietary SL-B50 rechargeable battery pack
- Charges inside the light, no need to remove from your weapon
- TEN-TAP® Programmable

	HIGH	LOW
LUMENS	2,000	250
CANDELA	85,000	11,500
DISTANCE	583m	214m
RUN TIME	2.5 hrs	11 hrs
Strobe runs 4.5 hours		



Description	Item #
ProTac 2.0 Rail Mount HP - System - Includes straight momentary pressure switch, (1) SL-B50 battery pack, mounting hardware, USB-C cord and M-LOK® - Black	89014
ProTac 2.0 Rail Mount HP - Light Only - Includes (1) SL-B50 battery pack, USB-C cord and M-LOK mount - Black	89013

Size and Weight	Battery
16 cm; 257g	(1) SL-B50 rechargeable battery pack

PROTAC® 2.0 RAIL MOUNT

High-performance tactical light that produces 2,000 lumens without sacrificing run time

- Rechargeable SL-B50 battery pack that charges inside the light using a USB-C cord
- MIL-STD 1913 or M-LOK® compatible rails
- TEN-TAP® Programmable



IPX4

With Remote Pressure Switch installed



IP67

With Standard Button Switch installed

	HIGH	LOW
LUMENS	2,000	250
CANDELA	17,700	2,150
DISTANCE	266m	93m
RUN TIME	2.5 hrs	11 hrs

Strobe runs 4.5 hours

Description	Item #
ProTac 2.0 Rail Mount - System - Includes straight momentary pressure switch, (1) SL-B50 battery pack, mounting hardware, USB-C cord and M-LOK® mount - Black	89009
ProTac 2.0 Rail Mount - Light Only - Includes (1) SL-B50 battery pack, USB-C cord and M-LOK® mount - Black	89003

Size and Weight	Battery
16 cm; 257g	(1) SL-B50 rechargeable battery pack

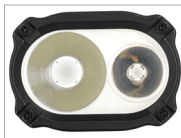


NEW

PROTAC® RAIL MOUNT VIR PRO

Rail mount VIR gun light delivers both white light and IR illumination, easily selectable via a head-mounted, mode selector switch

- Positional Head
- Jack-Cap® tailcap switch offers operational switch redundancy with both push-button operation or remote pressure switch operation
- Integrated IR to white light safety cutoff
- Integrated rail clamp attaches to MIL-STD-1913 Picatinny rail or M-LOK® compatible rails



IPX4

With Remote Pressure Switch installed



IPX7

With Standard button switch installed

	HIGH	MEDIUM	LOW	IR HIGH	IR LOW
LUMENS	1,100	540	120	2,300mW	600mW
CANDELA	40,000	19,000	4,200	---	---
DISTANCE	400m	276m	130m	---	---
RUN TIME SL-B26	2 hrs	3.75 hrs	14 hrs	2 hrs	9 hrs
RUN TIME CR123A	1.5 hrs	2.75 hrs	11 hrs	1.25 hrs	7.25 hrs

TEN-TAP® Programmable:

- White light high only/IR high only (default)
- White light medium only/IR high-low
- White light low-high/IR low-high

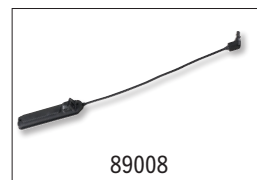
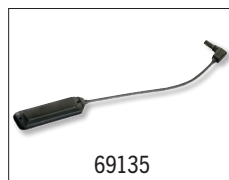
Description	Item #
ProTac Rail Mount VIR Pro - Includes Jack Cap®, M-LOK® Kit, Momentary Switch, Hardware Kit, 2.5 mm Allen Wrench, and (2) CR123A lithium batteries - Black	88138
ProTac Rail Mount VIR USB Pro - Includes Jack Cap®, M-LOK® Kit, Momentary Switch, Hardware Kit, 2.5 mm Allen Wrench, (1) SL-B26 battery pack, 101.6 cm (40 in) USB Cord - Black	88139

Size and Weight	Battery
14.4 cm; SL-B26: 249g // CR123A: 231g	(1) SL-B26 battery pack or (2) CR123A lithium batteries



PROTAC® RAIL MOUNT ACCESSORIES

DESCRIPTION	ITEM #	PROTAC RAIL MOUNT 1 RAIL MOUNT 2	PROTAC RAIL MOUNT HL-X	PROTAC RAIL MOUNT HL-X LASER	PROTAC RAIL MOUNT 1L-X SERIES	PROTAC RAIL MOUNT 1L-X PRO SERIES	PROTAC 2.0 RAIL MOUNT SERIES	PROTAC RAIL MOUNT HL-X PRO RAIL MOUNT HP-X PRO RAIL MOUNT VIR PRO
CR123A Lithium Batteries - 2pk	85175	✓	✓	✓	✓	✓		✓
CR123A Lithium Batteries - 6pk	85177	✓	✓	✓	✓	✓		✓
CR123A Lithium Batteries - 12pk	85179	✓	✓	✓	✓	✓		✓
CR123A Lithium Batteries - 400pk	85180	✓	✓	✓	✓	✓		✓
SL-B26 Battery Pack Charger Kit, USB (Includes (2) SL-B26 battery packs and USB cord)	22010		✓	✓				✓
SL-B26 Battery Pack Charger Kit, 120V AC (Includes (2) SL-B26 battery packs and USB cord)	22011		✓	✓				✓
8-Unit SL-B26 Bank Charger - 12V DC	20220		✓	✓				✓
SL-B26 Battery Pack - 1pk	22101		✓	✓				✓
SL-B50 Battery Pack - 1pk	22111						✓	
SL-B9 Battery Pack - 2pk	20237				✓	✓		
120V AC USB Charge Cord	22071		✓	✓				
230V AC USB Charge Cord	22072		✓	✓				
55.88 cm USB-C Cord	22084		✓	✓	✓	✓	✓	✓
Red Filter	69115	✓						
Blue Filter	69116	✓						
Green Filter	69117	✓						
IR Filter	69118	✓						
Opaque Filter	69124	✓						
M-LOK® Mount	88300	✓	✓		✓	✓	✓	✓
Jack-Cap®	88130							✓
ProTac® 2.0 RM Tail Switch	89020						✓	
Remote Retaining Clips	88178	✓	✓	✓		✓	✓	✓
Remote Switch	88125			✓				
Remote Switch	88098	✓						
Straight Momentary Pressure Switch	69135					✓	✓	✓
TLR Dual Remote Switch	69138					✓	✓	
Straight Latching Switch	89008					✓	✓	✓



WEDGE® XT



IPX7

Ultra-compact everyday carry flashlight

- Push-button tail switch for one-handed operation
- FIVE-TAP® lockout system prevents accidental activation inside your pocket or bag
- TEN-TAP® Programmable

Description	Item #
Wedge XT - Includes USB-C cord, lanyard - Black	88812
Wedge XT - Includes USB-C cord, lanyard - Coyote	88813

Size and Weight	Battery
10.8 cm; 74.3g	Lithium Polymer

	HIGH	LOW
LUMENS	500	50
CANDELA	1,900	200
DISTANCE	87m	28m
RUN TIME	2 hrs	11 hrs



WEDGE®



IPX7

Compact, pocket friendly, rechargeable, everyday carry flashlight

- Outfitted with an intuitive rotating thumb switch providing tactile control over constant-on or THRO® modes
- Ergonomic design fits comfortably in your hand
- Grooved for a suregrip

Description	Item #
Wedge - Includes USB-C cord, lanyard - Box - Black	88810
Wedge - Includes USB-C cord, lanyard - Box - Coyote	88811

Size and Weight	Battery
13.87 cm; 93.5g	Lithium Polymer

	THRO	CONSTANT-ON
LUMENS	1,000	300
CANDELA	3,000	1,200
DISTANCE	110m	69m
RUN TIME	35 sec	3 hrs



NEW

WEDGE® SL



IPX7

Thin, unibody construction, rechargeable inspection light

- TEN-TAP® programming
- Push-button tail switch
- Durable stainless steel pocket clip
- Rechargeable with LED battery status indicator - charges in 4 hours



Description	Item #
Wedge SL - Includes end cover - Black	88840
Wedge SL - Includes end cover - Coyote	88841
Wedge SL - Includes end cover - Silver	88842
Wedge SL End Cover - 6 pack	88843

Size and Weight	Battery
14.36 cm; 32.3g	Lithium Polymer

	THRO	HIGH	LOW
LUMENS	500	100	50
CANDELA	1,600	300	150
DISTANCE	80m	35m	24m
RUN TIME	---	1.75 hrs	3.5 hrs



PROTAC® 90 X



Multi-fuel, right angle, everyday carry light

- Features a right angle head that gives extra lighting capability
- Carry in your hand, attach to belt, harnesses or other gear
- TEN-TAP® Programmable

Description	Item #
ProTac 90 X - Includes (2) CR123A lithium batteries and holster - Black	88094
ProTac 90 X USB - Includes (1) SL-B26 battery pack and holster - Black	88095

Size and Weight	Battery
11.1 cm; SL-B26: 139g // CR123A: 125g	(1) SL-B26 battery pack or (2) CR123A lithium batteries

	HIGH	MEDIUM	LOW
LUMENS	1,000	300	65
CANDELA	7,350	2,060	450
DISTANCE	171m	91m	42m
RUN TIME CR123A	2.5 hrs	4 hrs	21 hrs
RUN TIME SL-B26	1.75 hrs	4.75 hrs	24 hrs

Strobe runs 2.5 hours (CR123A) // 3.5 hours (SL-B26)



PROTAC® 1L-1AA



Ultra-compact, everyday carry flashlight

- TEN-TAP® Programmable
- Multi-fuel - accepts multiple battery sources



AA	HIGH	LOW
LUMENS	150	40
CANDELA	2,750	720
DISTANCE	105m	53m
RUN TIME Alkaline	1 hr 20 min	7.5 hrs
RUN TIME Lithium	4.25 hrs	14 hrs

Strobe runs 3.5 hours (Alkaline) // 8 hours (Lithium)

CR123A	HIGH	LOW
LUMENS	350	40
CANDELA	6,400	720
DISTANCE	160m	53m
RUN TIME	1.5 hrs	14 hrs

Strobe runs 3 hours

Description	Item #
ProTac 1L-1AA - Includes (1) AA alkaline and CR123A lithium batteries - Black	88061
ProTac 1L-1AA - Includes (1) AA alkaline and CR123A lithium batteries - Coyote	88073

Size and Weight	Battery
10.8 cm; CR123A: 71g // Alkaline: 79g // Lithium: 68g	(1) CR123A lithium, (1) AA alkaline or (1) AA lithium



NEW

PROTAC® 2.0



High-performance light that produces 2,000 lumens without sacrificing run time

- TEN-TAP® Programmable
- Durable anodized machined aircraft aluminum construction
- Battery recharges inside the light by sliding back the sleeve

	HIGH	MEDIUM	LOW
LUMENS	2,000	570	100
CANDELA	17,300	5,000	890
DISTANCE	262m	142m	60m
RUN TIME	2.5 hrs	4.5 hrs	25 hrs

Strobe runs 4 hours 25 minutes



PROTAC® 2.0 HP



High-candela light with the ideal balance between candela and lumens, without compromising both reach & brightness

- TEN-TAP® Programmable
- One-handed option of momentary, variable intensity or strobe mode
- Slide sleeve back to charge battery while inside the light; fully recharges in 6 hours

	HIGH	MEDIUM	LOW
LUMENS	2,000	550	100
CANDELA	85,000	22,500	4,400
DISTANCE	583m	300m	132m
RUN TIME	2.5 hrs	5 hrs	31 hrs

Strobe runs 2 hours



Description	Item #
ProTac 2.0 - Includes (1) SL-B50 battery pack, USB-C cord and nylon holster - Black	89000

Size and Weight	Battery
15.49 cm; 234g	(1) SL-B50 battery pack

Description	Item #
ProTac 2.0 HP - Includes (1) SL-B50 battery pack, USB-C cord and nylon holster - Black	89023

Size and Weight	Battery
15.49 cm; 234g	(1) SL-B50 battery pack



PROTAC® 2AA-X



Multi-fuel, personal carry tactical flashlight

- TEN-TAP® Programmable
- About the size of a marker, it conveniently fits in your pocket
- Multi-function, push-button tail switch
- USB Model recharges in 4 hours

Lithium Polymer	HIGH	LOW
LUMENS	550	40
CANDELA	10,250	740
DISTANCE	203m	54m
RUN TIME	2.25 hrs	16 hrs

Strobe runs 4.5 hours

AA	HIGH	LOW
LUMENS	270	18
CANDELA	5,000	400
DISTANCE	141m	40m
RUN TIME	2.5 hrs	48 hrs

Strobe runs 5 hours

Description	Item #
ProTac 2AA-X USB - Includes lithium polymer battery pack, USB-C cord and nylon holster - Black	88135
ProTac 2AA-X USB - Includes lithium polymer battery pack, USB-C cord and nylon holster - Coyote	88137
ProTac 2AA-X - Includes (2) AA alkaline batteries and holster - Black	88033
ProTac 2AA-X - Includes (2) AA alkaline batteries and holster - Coyote	88072

Size and Weight	Battery
15.3 cm; 99g	Lithium polymer battery pack or (2) AA alkaline



PROTAC® 2L-X



Multi-fuel tactical light

- Multi-battery versatility
- Push-button tail switch for momentary or constant on operation
- TEN-TAP® Programmable

	HIGH	LOW
LUMENS	500	40
CANDELA	6,800	600
DISTANCE	165m	49m
RUN TIME CR123A	2.75 hrs	30 hrs
RUN TIME SL-B26	3.25 hrs	30 hrs

Strobe runs 3.25 hours (CR123A) // 4.5 hours (SL-B26)



Description	Item #
ProTac 2L-X - Includes (2) CR123A lithium batteries and holster - Clam - Black	88062
ProTac 2L-X - Includes (2) CR123A lithium batteries and holster - Box - Black	88063
ProTac 2L-X USB - Includes (1) SL-B26 battery pack, USB cord and holster - Clam - Black	88082
ProTac 2L-X USB - Includes (1) SL-B26 battery pack, USB cord and holster - Box - Black	88083

Size and Weight	Battery
13 cm; SL-B26: 125g // CR123A: 111g	(1) SL-B26 battery pack or (2) CR123A lithium batteries

PROTAC® 2L



A compact and lightweight tactical light

- TEN-TAP® Programmable
- Maximum light output throughout battery life
- Push-button tail switch for momentary or constant on operation

	HIGH	LOW
LUMENS	350	30
CANDELA	6,300	600
DISTANCE	159m	49m
RUN TIME	3.25 hrs	35 hrs

Strobe runs 6 hours



Description	Item #
ProTac 2L - Includes (2) CR123A lithium batteries and holster - Black	88031

Size and Weight	Battery
12.12 cm; 79g	(2) CR123A lithium batteries

NEW

PROTAC® HP-X



Unique combination of compact size, high candela and long distance performance flashlight

- Extreme beam reach to penetrate through smoke, fog and photonic barriers at long distances
- TEN-TAP® Programmable
- Multi-fuel - SL-B26 battery pack or CR123A lithium batteries

Description	Item #
ProTac HP-X - Includes (2) CR123A lithium batteries and holster - Box - Black	89021
ProTac HP-X USB - Includes (1) SL-B26 battery pack, USB cord and holster - Box - Black	89022

Size and Weight	Battery
14.1 cm; SL-B26: 168g // CR123A: 154g	(1) SL-B26 battery pack or (2) CR123A lithium batteries

	HIGH	MEDIUM	LOW
LUMENS	800	240	45
CANDELA	105,000	34,000	6,300
DISTANCE	648m	369m	159m
RUN TIME CR123A	1.5 hrs	4.25 hrs	24 hrs
RUN TIME SL-B26	2 hrs	5 hrs	31 hrs

Strobe runs 3 hours (CR123A) // 4.25 hours (SL-B26)



PROTAC® HL-X



Multi-fuel flashlight with a high-lumen beam

- TEN-TAP® Programmable
- Pocket clip for convenience
- Anti-roll head design

Description	Item #
ProTac HL-X - Includes (2) CR123A lithium batteries and holster - Clam - Black	88064
ProTac HL-X - Includes (2) CR123A lithium batteries and holster - Box - Black	88065
ProTac HL-X USB - Includes (1) SL-B26 battery pack, USB cord and holster - Clam - Black	88084
ProTac HL-X USB - Includes (1) SL-B26 battery pack, USB cord and holster - Box - Black	88085

Size and Weight	Battery
13.8 cm; SL-B26: 176g // CR123A: 162g	(1) SL-B26 battery pack or (2) CR123A lithium batteries

CR123A	HIGH	MEDIUM	LOW
LUMENS	1,000	400	65
CANDELA	27,100	10,000	1,600
DISTANCE	330m	200m	80m
RUN TIME	1.25 hrs	3 hrs	20 hrs

Strobe runs 2.5 hours



SL-B26	HIGH	MEDIUM	LOW
LUMENS	1,300	420	70
CANDELA	35,000	11,000	1,800
DISTANCE	374m	210m	85m
RUN TIME	1.5 hrs	3.75 hrs	25 hrs

Strobe runs 3.25 hours

PROTAC® HL



A compact, tactical flashlight that produces a flood beam for a large area

- TEN-TAP® Programmable
- Pocket clip for convenience
- Anti roll head design

Description	Item #
ProTac HL - Includes (2) CR123A batteries and holster - Black	88040

Size and Weight	Battery
13.7 cm; 158g	(2) CR123A lithium batteries

	HIGH	LOW
LUMENS	750	35
CANDELA	18,300	900
DISTANCE	270m	60m
RUN TIME	1.25 hrs	18 hrs

Strobe runs 2.5 hours



PROTAC HPL® USB



IPX4

Versatile rechargeable hand held, tactical flashlight for down-range application

- Self-adjusting battery cradle secures multiple battery sizes and eliminates battery rattle
- Slide forward to access USB port for rechargeability
- TEN-TAP® Programmable

	HIGH	MEDIUM	LOW
LUMENS	1,000	400	65
CANDELA	35,000	14,100	2,250
DISTANCE	374m	237m	95m
RUN TIME	1.5 hrs	3.5 hrs	24 hrs

Strobe runs 3 hours



Description	Item #
ProTac HPL USB - Includes lithium-ion battery, USB cord and holster - Clam - Black	88076
ProTac HPL USB - Includes lithium-ion battery, USB cord and holster - Box - Black	88077

Size and Weight	Battery
18 cm; 262g	Lithium-ion uses the same battery (#74175) as the Strion, also accepts SL-B26 battery pack or (2) CR123A lithium batteries



PROTAC HL® USB



IPX4

High-lumen, USB rechargeable tactical light

- Self-adjusting battery cradle secures multiple battery sizes and eliminates battery rattle
- TEN-TAP® Programmable

	HIGH	MEDIUM	LOW
LUMENS	1,000	380	65
CANDELA	12,000	4,420	700
DISTANCE	219m	133m	53m
RUN TIME	1.5 hrs	3.5 hrs	23 hrs

Strobe runs 1.5 hours

Description	Item #
ProTac HL USB - 120V AC/12V DC and holster - Black	88054
ProTac HL USB - Includes USB cord - Black	88052

Size and Weight	Battery
16.5 cm; 204g	Lithium-ion battery - uses the same battery (#74175) as the Strion; also SL-B26 battery pack or (2) CR123A lithium



PROTAC HL® 6



Full-size, heavy duty flashlight delivers powerhouse illumination with 2 hours of run time

- TEN-TAP® Programmable
- Recharges in 5 hours
- Sure grip rubber sleeve provides thermal insulation

Description	Item #
ProTac HL 6 - Includes 120V AC Adapter, (2) SL-B48 battery packs, "Y" USB-C cord and wrist lanyard - Black	88131
ProTac HL 6 - Includes (2) SL-B48 battery packs, "Y" USB-C cord and wrist lanyard - Black	88132

Size and Weight	Battery
26.6 cm; 590g	(2) SL-B48 battery pack

	HIGH	MEDIUM	LOW
LUMENS	5,300	1,500	450
CANDELA	80,000	23,000	6,700
DISTANCE	566m	303m	164m
RUN TIME	2 hrs	3.75 hrs	12.5 hrs

Strobe runs 4 hours



NEW

POLYTAC® 1X



IPX7

Professional quality, multi-fuel flashlight with polymer construction for lightweight durability

- SL-B9 recharges in 2.5 hours via USB-C cord
- TEN-TAP® Programmable
- Removable, two way pocket clip

	SL-B9		CR123A		AA	
	HIGH	LOW	HIGH	LOW	HIGH	LOW
LUMENS	500	40	350	40	150	40
CANDELA	18,000	1,000	12,000	1,000	5,000	1,000
DISTANCE	268m	63m	219m	63m	141m	63m
RUN TIME	1 hrs	8 hrs	1.5 hrs	14 hrs	5 hrs	14 hrs

Strobe runs SL-B9: 1.75 hours // CR123A: 2.25 hours // AA: 7 hours

Description	Item #	COO	TAA
PolyTac 1X - Includes (1) CR123A lithium and (1) AA alkaline battery - Black	86000	US	YES
PolyTac 1X - Includes (1) CR123A lithium and (1) AA alkaline battery - Yellow	86002	US	YES
PolyTac 1X USB - Includes (1) SL-B9 battery pack - Black	86001	US	YES
PolyTac 1X USB - Includes (1) SL-B9 battery pack - Yellow	86003	US	YES



Size and Weight	Battery
11.96 cm; SL-B9: 85.9g // CR123A: 83.1g // AA: 83.1g	(1) SL-B9 battery pack, (1) CR123A lithium battery or (1) AA alkaline battery

POLYTAC® X



IPX7

Rugged, multi-fuel flashlight with polymer construction

- High-impact, super-tough nylon polymer with “rocky stipple” texture for a sure grip
- TEN-TAP® Programmable
- Removable, multi-position pocket clip

	HIGH	MEDIUM	LOW
LUMENS	600	260	35
CANDELA	11,485	4,930	675
DISTANCE	205m	135m	50m
RUN TIME CR123A	2.75 hrs	5.5 hrs	34 hrs
RUN TIME SL-B26	3.5 hrs	5.75 hrs	36 hrs

Strobe runs 5.5 hours (CR123A) // 8 hours (SL-B26)



NFPA

Flashlight meets 500°F requirements of NFPA 1970–14.2 (2025)

Description	CLAM	BOX	NSN/MCN	COO	TAA
PolyTac X - Includes (2) CR123A lithium batteries - Black	88600	88603	--	US	YES
PolyTac X - Includes (2) CR123A lithium batteries - Yellow	88601	88604	--	US	YES
PolyTac X - Includes (2) CR123A lithium batteries - Coyote	88602	88605	--	US	YES
PolyTac X USB - Includes (1) SL-B26 battery pack and USB cord - Black	88610	88613	Clam - 6230-01-690-0331 Box - 6230-01-692-9761	US	YES
PolyTac X USB - Includes (1) SL-B26 battery pack and USB cord - Yellow	88611	88614	--	--	--
PolyTac X USB - Includes (1) SL-B26 battery pack and USB cord - Coyote	88612	88615	--	--	--

Size and Weight	Battery
13.87 cm; SL-B26: 139g // CR123A: 125g	(1) SL-B26 battery pack or (2) CR123A lithium batteries

PROTAC® // POLYTAC® ACCESSORIES

DESCRIPTION	ITEM #	PROTAC 1L-1AA	PROTAC 2AA-X USB	PROTAC 2.0 SERIES	PROTAC 2L	PROTAC 2L-X	PROTAC HL	PROTAC HL USB	PROTAC HL-X	PROTAC HPL USB	PROTAC HL 6	POLYTAC 1X	POLYTAC	POLYTAC X
CR123A Batteries - 2pk	85175	✓			✓	✓	✓	✓	✓	✓		✓	✓	✓
CR123A Batteries - 6pk	85180	✓			✓	✓	✓	✓	✓	✓		✓	✓	✓
CR123A Batteries - 12pk	85177	✓			✓	✓	✓	✓	✓	✓		✓	✓	✓
CR123A Batteries - 400pk	85179	✓			✓	✓	✓	✓	✓	✓		✓	✓	✓
SL-B26 Battery Pack - 1pk	22101					✓	✓	✓	✓	✓				✓
SL-B50 Battery Pack - 1pk	22111			✓										
Lithium Polymer Battery Pack	88136		✓											
SL-B48 Battery Pack - 2pk	88133										✓			
SL-B9 Battery Pack	20237											✓		
Lithium-ion Battery	74175						✓	✓		✓				
Li-Ion USB Battery Charge Cradle	22100					✓		✓	✓	✓				✓
120V AC Charge Cord	22071					✓			✓	✓				✓
22" (55.88 cm) USB-C Cord	22084		✓	✓		✓			✓	✓				✓
"Y" USB-C Cord	22090										✓			
Nylon Holster	88036	✓			✓									
Nylon Holster	88038		✓											
Nylon Holster	88043						✓		✓					
Nylon Holster	88086			✓										
Nylon Holster	85905											✓	✓	✓
Tactical Holster	88051						✓	✓						
Helmet Mount	68085												✓	✓
Poly Mount Kit	68089												✓	✓
Filter - Red	69115											✓		✓
Filter - Blue	69116											✓		✓
Filter - Green	69117											✓		✓
Filter - IR	69118											✓		✓
Flip Lens - Red	88115												✓	✓
Flip Lens - Blue	85116												✓	✓
Flip Lens - Green	85117												✓	✓
Flip Lens - IR	74039												✓	✓
Red Safety Wand	88057			✓			✓	✓	✓					
Red Safety Wand	61311							✓				✓		
Red Safety Wand	74903												✓	✓
Yellow Safety Wand	74904												✓	✓
Glow in the Dark Safety Wand	74913												✓	✓
Rubber Helmet Strap	99075												✓	✓



STINGER® 2020



Rechargeable, high-lumen flashlight with mode selector switch

- Dual power switches and intuitive mode selector switch (as shown in the image below) for ease of use
- Multiple charging options; recharges in 8 hours
- Anti-roll design

	HIGH	MEDIUM	LOW
LUMENS	2,000	850	100
CANDELA	25,000	10,000	1,200
DISTANCE	315m	200m	70m
RUN TIME	2 hrs	4 hrs	24 hrs

Strobe runs 3.25 hours



Description	Item #	COO	TAA
Stinger 2020 - 120V AC/12V DC - 1 holder - Black	78101	US	YES
Stinger 2020 - 230V AC/12V DC - 1 holder - Black	78102	US	YES
Stinger 2020 - 240V AC/12V DC - 1 holder - Black	78103	US	YES
Stinger 2020 - 12V DC - 1 holder - Black	78104	US	YES
Stinger 2020 - Light only - Includes "Y" USB cord - Black	78100	US	YES



Size and Weight	Battery
19.48 cm; 350g	(2) SL-B26 battery packs

STINGER® COLOR-RITE®



Rechargeable flashlight featuring Streamlight's Color-Rite Technology®

- Provides warm white light that produces a natural balance of color
- 90 CRI LED for true color recognition of wire colors, paint and fine details
- Multi-function, push-button switch: high, medium, low or strobe

	HIGH	MEDIUM	LOW
LUMENS	500	275	140
CANDELA	17,500	9,000	4,500
DISTANCE	265m	190m	134m
RUN TIME	1.5 hrs	2.5 hrs	5 hrs

Strobe runs 3 hours / Color Temperature: 3,000k



Color-Rite®

Description	Item #
Stinger Color-Rite - 120V/100V AC - Black	75499
Stinger Color-Rite - 230V/100V AC - Black	75500
Stinger Color-Rite - 240V/100V AC - Black	75501
Stinger Color-Rite - Light Only - Black	75498

Size and Weight	Battery
21.36 cm; 352g	NiMH



STINGER LED HL® // STINGER DS LED HL®



High-lumen, flashlight provides maximum illumination

- Wide beam pattern gives you a bright flood light
- High, medium, low and strobe modes; recharges in 4.5 hours
- DS model provides both a tailcap and head switch

	HIGH	MEDIUM	LOW
LUMENS	800	400	200
CANDELA	24,000	12,000	6,000
DISTANCE	310m	219m	155m
RUN TIME	1.5 hrs	2.5 hrs	5 hrs

Strobe runs 3 hours

Description	Item #	NSN/MCN #	COO	TAA
Stinger LED HL - 120V AC/12V DC - 2 holders - Black	75430	---	--	--
Stinger DS LED HL - 120V AC/12V DC - 2 holders - Black	95302	6230-01-413-5270	US	YES
Stinger LED HL - 230V AC/12V DC - 2 holders - Black	75440	---	---	---
Stinger DS LED HL - 230V AC/12V DC - 2 holders - Black	75464	---	---	---
Stinger LED HL - 240V AC/12V DC - 2 holders - Black	75448	---	---	---
Stinger DS LED HL - 240V AC/12V DC - 2 holders - Black	75472	---	---	---
Stinger LED HL - Light Only - Black	95301	---	US	YES
Stinger DS LED HL - Light Only - Black	75453	---	---	---

Size and Weight	Battery
LED HL: 21.36 cm; 352g // DS LED HL: 22.48 cm; 364g	NiMH



STINGER® LED // STINGER DS® LED



Rugged, rechargeable flashlight built for maximum versatility

- Optimal balance of performance and value
- High, medium, low and strobe modes
- DS model provides both a tailcap and head switch

	HIGH	MEDIUM	LOW
LUMENS	425	200	100
CANDELA	26,000	12,000	6,000
DISTANCE	322m	219m	155m
RUN TIME	3 hrs	5.5 hrs	10 hrs

Strobe runs 7.5 hours

Description	Item #	NSN/MCN #	COO	TAA
Stinger LED - 120V AC/12V DC - Black	95304	---	US	YES
Stinger DS LED - 120V AC/12V DC - Black	95306	---	US	YES
Stinger LED - 230V AC/12V DC - Black	95307	---	---	---
Stinger DS LED - 230V AC/12V DC - Black	75972	---	---	---
Stinger LED - 240V AC/12V DC - Black	75729	---	---	---
Stinger DS LED - 240V AC/12V DC - Black	75829	---	---	---
Stinger LED - 12V DC - Black	95303	6230-01-628-6642	US	YES
Stinger DS LED - 12V DC - Black	95305	6230-01-492-9909	US	YES
Stinger LED - Light Only - Black	75710	---	US	YES
Stinger DS LED - Light Only - Black	75810	---	US	YES

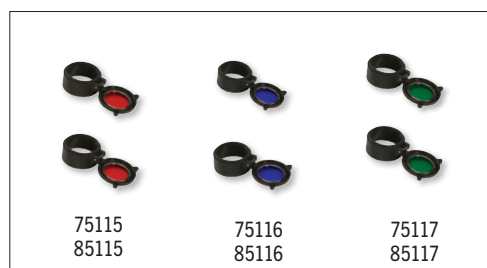
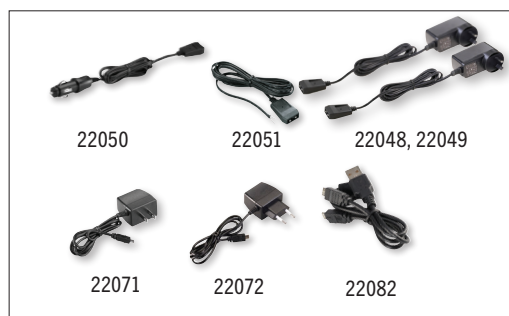
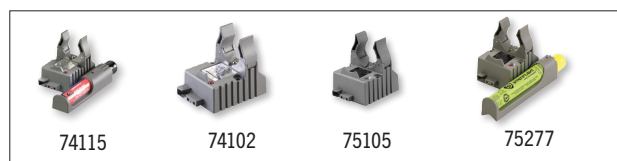
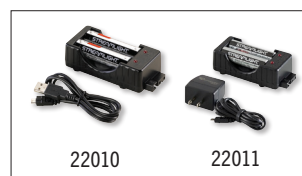
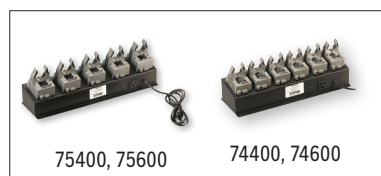
Size and Weight	Battery
LED: 21.36 cm; 352g // DS LED: 22.48 cm; 364g	NiMH



STINGER® ACCESSORIES

DESCRIPTION	ITEM #	NSN/MCN #	STINGER 2020	STINGER COLOR-RITE	STINGER LED HL // DS LED HL	STINGER LED // DS LED	STRION LED HL / DS LED HL	STRION LED / DS	STRION 2020
5-Unit Bank Charger - 120V	75400	6130-01-577-0453	✓	✓	✓	✓			
5-Unit Bank Charger - 230V	75600	6130-01-548-0435	✓	✓	✓	✓			
5-Unit Bank Charger - 120V	74400	---					✓	✓	✓
5-Unit Bank Charger - 230V	74600	---					✓	✓	✓
8-Unit SL-B26 Bank Charger - 120V DC	22024	---	✓						
SL-B26 Battery Pack Charger Kit, USB	22010	---	✓						
SL-B26 Battery Pack Charger Kit, 120V AC	22011	---	✓						
PiggyBack® Charger	74115	---					✓	✓	✓
Smart Charger	75105	6130-01-443-9415	✓	✓	✓	✓			
Smart PiggyBack® Charger	75277	---		✓	✓	✓			
Charger Holder	74102	---					✓	✓	✓
Lithium-ion Battery	74436	---					✓	✓	✓
Li-Ion Battery Stick	75175	---					✓	✓	✓
Li-Ion Battery Stick	75176	---		✓	✓	✓			
NiMH Battery Stick	75375	---		✓	✓	✓			
SL-B26 Battery Pack - 1pk	22101	---	✓						
SL-B26 Battery Carrier batteries included	78105	---	✓						
SL-B26 Battery Carrier batteries NOT included	78106	---	✓						
12V DC1 Charge Cord	22051	---	✓	✓	✓	✓	✓	✓	✓
12V DC2 Charge Cord	22050	---	✓	✓	✓	✓	✓	✓	✓
120V AC Charge Cord	22071	---	✓	✓	✓	✓	✓	✓	✓
230V AC Charge Cord	22072	---	✓	✓	✓	✓	✓	✓	✓
240V AC Charge Cord	22048	---	✓	✓	✓	✓			
240V AC Charge Cord	22049	---					✓	✓	✓
"Y" USB Cord	22082	---	✓						
Stinger 2020 Switch Kit	78115	---	✓						
Stinger 2020 Rear Door Kit	78116	---	✓						
Stinger 2020 Service Kit	78117	---	✓						
Leather Plain Holster	74059	---					✓	✓	✓
Leather Plain Holster	75133	---			✓	✓			
Leather Weave Holster	78114	---	✓						
Leather Weave Holster	75134	---			✓	✓			
Leather Weave Holster	74060	---					✓	✓	✓
Nylon Holster	75927	---		✓	✓	✓			
Nylon Holster	78107	---	✓						
Nylon Holster	85905	---					✓	✓	✓
Loop Nylon Holster	75928	---		✓	✓	✓			
Tactical Holster	88051	---					✓	✓	✓
Vertical Grip	69114	---					✓	✓	✓
Duty Holster	88053	---		✓	✓	✓			
Rail Mount	74200	---					✓	✓	✓
Ring Holder	75906	---		✓	✓	✓			
Facecap Ring Kit	78113	---	✓						

DESCRIPTION	ITEM #	NSN/MCN #	STINGER 2020	STINGER COLOR-RITE	STINGER LED HL // DS LED HL	STINGER LED // DS LED	STRION LED HL / DS LED HL	STRION LED / DS	STRION 2020
Red Flip Lens	75115	---	√	√	√	√			
Red Flip Lens	85115	---					√	√	√
Blue Flip Lens	75116	---	√	√	√	√			
Blue Flip Lens	85116	---					√	√	√
Green Flip Lens	75117	---	√	√	√	√			
Green Flip Lens	85117	---					√	√	√
IR Flip Lens	75027	---	√	√	√	√			
Red Wand	74903	---					√	√	√
Red Wand	75903	---	√	√	√	√			
White Wand	75908	---	√	√	√	√			
Blue Wand	75902	---	√	√	√	√			
Yellow Wand	74904	---					√	√	√
Yellow Wand	75904	---	√	√	√	√			
Glow in the Dark Wand	74913	---					√	√	√
Glow in the Dark Wand	75913	---	√	√	√	√			





STRION® 2020



Compact, high-lumen flashlight with intuitive mode selector switch

- Features independently functioning head and tail switches
- Works with existing Strion series chargers; recharges in 4.5 hours
- PiggyBack® charger option available

	HIGH	MEDIUM	LOW
LUMENS	1,200	460	120
CANDELA	28,000	10,000	3,000
DISTANCE	335m	200m	110m
RUN TIME	1.75 hrs	5.5 hrs	12 hrs

Strobe runs 3.5 hours



Description	Item #
Strion 2020 - 120V/100V AC - 1 Holder - Black	74431
Strion 2020 - 120V/100V AC - PiggyBack - Black	74435
Strion 2020 - 230V/12V DC - 1 Holder - Black	74432
Strion 2020 - 240V/12V DC - 1 Holder - Black	74433
Strion 2020 - 12V DC - Black	74434
Strion 2020 - Light Only - Black	74430



Battery status indicator:
Green = Charged
Red = Low battery

Size and Weight	Battery
16.1 cm; 161.6g	Lithium-ion

STRION LED HL® / STRION® DS HL



Delivers wide beam brightness that lights up a scene with dual switch option

- TEN-TAP® Programming
- Recharges in 3.5 hours
- DS model provides both a tailcap and head switch

DS HL	HIGH	MEDIUM	LOW
LUMENS	700	300	40
CANDELA	12,000	5,000	800
DISTANCE	219m	141m	57m
RUN TIME	1.25 hrs	3.5 hrs	24 hrs

Strobe runs 2.5 hours

HL	HIGH	MEDIUM	LOW
LUMENS	615	320	160
CANDELA	12,000	6,000	3,000
DISTANCE	219m	155m	110m
RUN TIME	1.25 hrs	2.5 hrs	4.5 hrs

Strobe runs 3 hours



Description	DS HL
Strion LED HL - 120V AC/12V DC - 2 Holders - Black	74752
Strion LED HL - 230V AC/12V DC - 2 Holders - Black	74761
Strion LED HL - 240V AC/12V DC - 1 Holder - Black	74764
Strion DS HL - 120V AC/12V DC - 2 Holders - Black	74612
Strion DS HL - 230V AC/12V DC - 2 Holders - Black	74616
Strion DS HL - 240V AC/12V DC - 1 Holder - Black	74618

Size and Weight	Battery
HL: 14.99 cm; 148g //	Lithium-ion
DS HL: 16.1 cm; 153g	

STRION® LED // STRION® DS



Compact flashlight that provides good beam distance, peripheral light and long lasting power - all at one exceptional value

- Recharges in 3.5 hours
- High, medium, low and strobe modes
- DS model provides both a tailcap and head switch

LED	HIGH	MEDIUM	LOW
LUMENS	375	175	80
CANDELA	12,000	6,500	3,200
DISTANCE	219m	161m	113m
RUN TIME	2.5 hrs	4.75 hrs	9.5 hrs

Strobe runs 6.5 hours



Description	Item #	NSN/MCN #	COO	TAA
Strion LED - 120V AC/12V DC - Black	74301	---	---	---
Strion DS - 120V AC/12V DC - Black	74411	---	---	---
Strion LED - 230V AC/12V DC - Black	74311	6230-01-595-1946	US	YES
Strion DS - 230V AC/12V DC - Black	74415	---	---	---
Strion LED - 240V AC/12V DC - Black	74321	---	---	---
Strion DS - 240V AC/12V DC - Black	74418	---	---	---

Size and Weight	Battery
LED: 14.99 cm; 148g // DS: 16.26 cm; 153g	Lithium-ion

DS	HIGH	MEDIUM	LOW
LUMENS	375	150	40
CANDELA	12,000	5,000	1,300
DISTANCE	219m	141m	72m
RUN TIME	2.5 hrs	6.25 hrs	24 hrs

Strobe runs 5 hours

WAYPOINT® 400



IPX8

High-powered, rechargeable distance spotlight

- Far reaching beam
- Integrated stand for hands-free lighting
- Rechargeable in 4 hours

Description	Item #
Waypoint 400 - 230V/240V AC - Yellow	44920
Waypoint 400 - 230V/240V AC - Black NSN# 6230-01-686-335	44921
Waypoint 400 - 120V AC - Yellow	44910
Waypoint 400 - 120V AC - Black	44911

Size and Weight	Battery
17.15 cm; 691g	Lithium-ion

	HIGH	MEDIUM	LOW
LUMENS	1,400	600	38
CANDELA	400,000	165,000	10,000
DISTANCE	1,265m	812m	200m
RUN TIME	3.25 hrs	7.5 hrs	84 hrs



WAYPOINT®



IPX4

Alkaline powered spotlight for long range targeting

- Long distance, ultra-bright beam
- Integrated stand for hands-free lighting
- 12V DC power cord for unlimited run time (not a charge cord)

Description	Item #
Waypoint - Includes 12V DC power cord - Yellow	44900
Waypoint - Includes 12V DC power cord - Black	44902
Waypoint - Includes 12V DC power cord - Clam - Yellow	44904
Waypoint - Includes 12V DC power cord - Clam - Black	44905

Size and Weight	Battery
17.15 cm; 816g	(4) C batteries (not included)

	HIGH	LOW
LUMENS	550	40
CANDELA	100,000	7,900
DISTANCE	625m	178m
RUN TIME	10 hrs	82 hrs

12V DC Power Cord - Unlimited run time
Emergency Signal - Runs 82 hours



SUPER SIEGE®



IPX7

Rechargeable lantern provides 360° of bright light that illuminates an entire area

- Easy, large button for turning off and on with battery status indicator
- Rechargeable - charges in 7 hours
- Auxiliary charger charges portable devices
- Glare Guard™ will shield light from behind for up-close task lighting

Description	Item #
Super Siege - Int'l AC - Coyote	44948
Super Siege - Int'l AC - Yellow	44946
Super Siege - 120V AC - Coyote	44947
Super Siege - 120V AC - Yellow	44945

Size and Weight	Battery
19.05 cm; 867.62g	Lithium-ion

WHITE	HIGH	MEDIUM	LOW
LUMENS	1,100	550	125
RUN TIME	5.75 hrs	11.5 hrs	36.25 hrs
RED	HIGH	SOS	LOW
LUMENS	2.7	2.7	1
RUN TIME	140 hrs	320 hrs	348 hrs



THE SIEGE®



Compact, alkaline battery powered hand lantern with ergonomic handle

- Spring loaded D-rings for hanging
- Battery indicator in switch
- Three white light settings, a red light for softer light and an SOS mode



WHITE	HIGH	MEDIUM	LOW
LUMENS	540	275	55
RUN TIME	30 hrs	70 hrs	295 hrs
RED	HIGH	SOS	
LUMENS	10	10	
RUN TIME	235 hrs	430 hrs	

Description	Item #
The Siege - Coyote	44931
Size and Weight	Battery
18.41 cm; 878.83g	(3) D batteries

WAYPOINT® ACCESSORIES

DESCRIPTION	ITEM #	WAYPOINT 400	WAYPOINT
Polymer Storage Mount	44918	✓	
Polymer Storage Mount	44908		✓
120V AC Charge Cord	44909	✓	
Int'l AC Charge Cord	44919	✓	
12V AC Power Cord	44923	✓	
12V AC Power Cord	44903		✓
Red Filter	44924		✓
Green Filter	44925		✓
Red Filter	44915	✓	
Green Filter	44916	✓	



SIEGE® AA



A rugged, compact lantern when you need a lot of light without taking up a lot of space

- One white LED and two red LEDs; five output modes
- Spring loaded D-rings for hanging and ergonomic handle
- Battery indicator in switch



Features rugged carry handle and D-rings for hanging



WHITE	HIGH	MEDIUM	LOW
LUMENS	200	100	50
RUN TIME	7 hrs	15.5 hrs	37 hrs
RED	HIGH	SOS	
LUMENS	0.7	0.7	
RUN TIME	192 hrs	288 hrs	

Description	Item #
Siege AA - Coyote	44941
Siege AA - Yellow with Magnetic Base	44943

Size and Weight	Battery
13.82 cm; 249.47g //	(3) AA alkaline
257.98g with Magnetic base	batteries

SIEGE® ACCESSORIES

DESCRIPTION	ITEM #	SUPER SIEGE	THE SIEGE	SIEGE AA
Glare Guard™	44950	✓	✓	
Magnetic Accessory Base - Coyote	44942			✓
Magnetic Accessory Base - Black	44951	✓		
Magnetic Accessory Base - Black	44952		✓	
120V AC Charge Cord	44909	✓		
International AC Adapter	44919	✓		
240V AC (AUS/NZ) Blade	44926	✓		





PORTABLE SCENE LIGHT II



Cordless, compact scene light enhances safety at your work site by eliminating trip hazards

- 360° rotating head directs the light where you need it; stackable for “light tower” capability
- 18 LEDs provide 10,000 lumens to light up an entire scene
- Hooked feet for hanging over doors, guard rails, fences, etc.

	100%	80%	60%	40%	20%
LUMENS	10,000	8,300	6,300	4,500	2,300
RUN TIME	2 hrs	2.75 hrs	3.75 hrs	5.75 hrs	11 hrs

Description	Item #
Portable Scene Light II - 120V AC/12V DC - Red	46000
Portable Scene Light II - 230V AC/12V DC - Red	46001
Portable Scene Light II - 240V AC/12V DC - Red	46002

Size and Weight	Battery
40.6 cm; 7.06kg	Lithium-ion

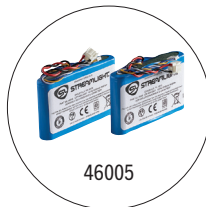


LANTERN ACCESSORIES

DESCRIPTION	ITEM #	PORTABLE SCENE LIGHT	PORTABLE SCENE LIGHT II
12V DC Charge Cord (3.048 meters)	22056	√	√
Power Supply	22083	√	√
120V AC Charge Cord	22074	√	√
230V AC Charge Cord	22075	√	√
240V AC Charge Cord	22076	√	√
Battery (Sealed Lead Acid)	45630	√	
Battery (Lithium-ion)	46005		√
Heavy Duty Strap with Carabiner Lock	45677	√	√



45630



46005



44050



45677



22056



22083



22074



22075



22076

PORTABLE SCENE LIGHT



Portable and collapsible flood light with extreme brightness

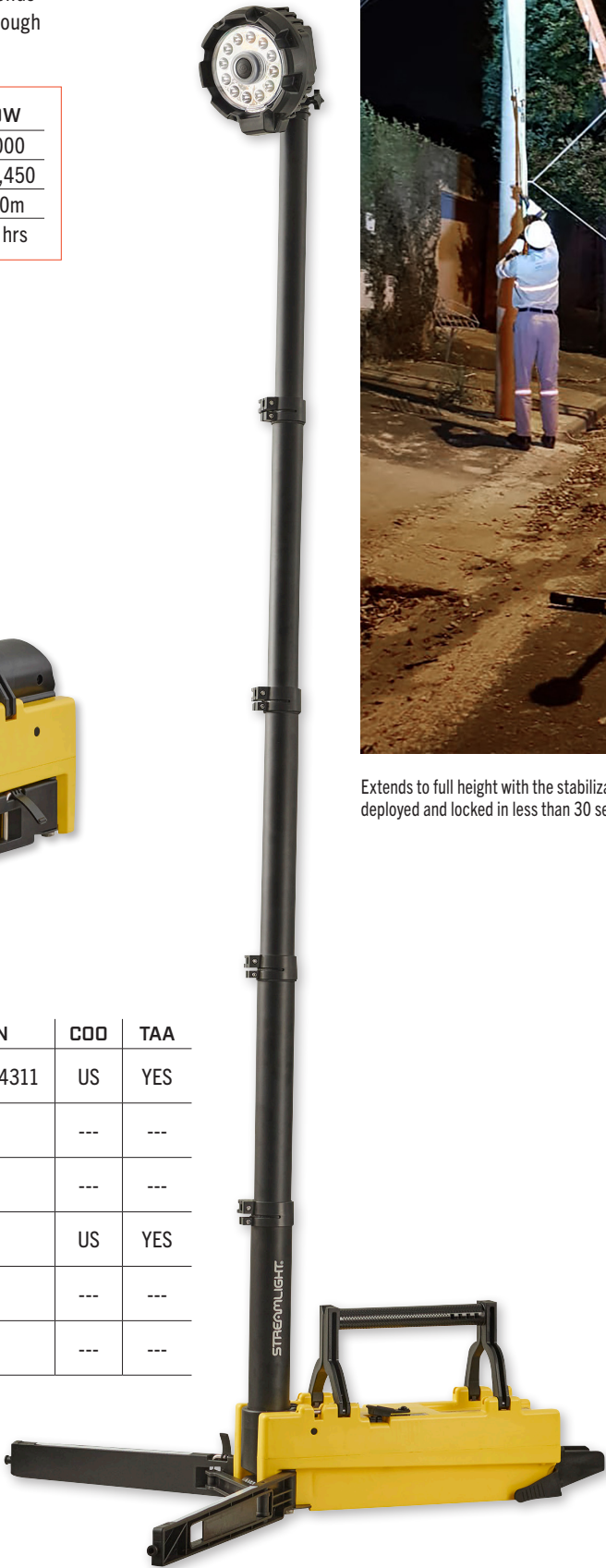
- 90° swivel neck shines light to out-of-the-way places
- Extends to full height (182.88 cm | EXT: 213.36 cm) within seconds
- Designed to adapt to tight space, rugged enough to withstand rough terrain and resists 40 mph winds

	HIGH	MEDIUM	LOW
LUMENS	10,000	5,300	2,000
CANDELA	95,000	49,500	22,450
DISTANCE	616m	445m	300m
RUN TIME	2 hrs	4 hrs	12 hrs



Description	Item #	NSN/MCN	COO	TAA
Portable Scene Light - 120V AC/12V DC - Yellow	45670	6230-01-652-4311	US	YES
Portable Scene Light - 230V AC/12V DC - Yellow	45671	---	---	---
Portable Scene Light - 240V AC/12V DC - Yellow	45672	---	---	---
Portable Scene Light EXT - 120V AC/12V DC - Yellow	45680	---	US	YES
Portable Scene Light EXT - 230V AC/12V DC - Yellow	45681	---	---	---
Portable Scene Light EXT - 240V AC/12V DC - Yellow	45682	---	---	---

Size and Weight	Battery
57.2 cm; 11.7kg EXT: 64.8 cm; 11.9kg	Zero-maintenance, sealed lead acid; Can also be powered by 12V DC power cord



Extends to full height with the stabilization legs fully deployed and locked in less than 30 seconds





NEW

MEGASTREAM® USB

IPX7

Rechargeable flashlight combining intense brightness with long-distance beam reach and long run time

- The hot-swappable battery capability lets you keep going—charge one battery while using another, so you always have a fully charged backup
- Powered by a SL-B34 rechargeable battery; recharges in 5 hours
- Sliding sleeve protects the USB port

	HIGH	MEDIUM	LOW
LUMENS	1,800	500	150
CANDELA	26,000	7,200	2,100
DISTANCE	322m	170m	92m
RUN TIME	2 hrs	3.5 hrs	13 hrs



Description	Item #
MegaStream USB - Includes USB-C cord, holster and (1) SL-B34 battery pack - Black	66210

Size and Weight	Battery
13.4 cm; 152g	(1) SL-B34 battery pack



NEW

MEGASTREAM® HP USB



Powerhouse, high-candela, long range hand held flashlight designed for convenience

- Power up via the charge port in the body or swap out the removable battery to charge while using a fresh one
- Slide the head cover back for USB-C port
- Powered by a SL-B34 rechargeable battery; recharges in 5 hours

	HIGH	MEDIUM	LOW
LUMENS	1,350	470	145
CANDELA	310,000	108,000	32,000
DISTANCE	1,114m	657m	358m
RUN TIME	2 hrs	4 hrs	15 hrs



Description	Item #
MegaStream HP USB - Includes USB-C cord, holster and (1) SL-B34 battery pack - Black	66211

Size and Weight	Battery
16.8 cm; 254g	(1) SL-B34 battery pack

MACROSTREAM® USB



Compact, rechargeable flashlight that fits comfortably in the palm of your hand

- Lithium-ion battery charges in 4 hours
- Durable aluminium construction
- Pocket clip attaches to visor

	HIGH	LOW
LUMENS	500	50
CANDELA	2,000	220
DISTANCE	90m	30m
RUN TIME	2 hrs	8 hrs



Description	Item #
MacroStream USB - Includes lanyard - Black	66320

Size and Weight	Battery
11.43 cm; 62.4g	Lithium-ion





MICROSTREAM®



Ultra-compact personal light

- Clip it to your hat or pocket
- Alkaline battery powered



LUMENS	45
CANDELA	420
DISTANCE	41m
RUN TIME	2.25 hrs

Description	Item #	NSN/MCN#
MicroStream - Includes (1) AAA alkaline battery - Black	66318	6230-01-583-9046

Size and Weight	Battery
9.14 cm; 31.2g	(1) AAA alkaline battery

MICROSTREAM® USB



Rechargeable pocket light

- Discreet light that fits in your pocket
- Clip it to your pocket or hat for hands-free use
- USB rechargeable – metal sleeve protects charge port; slide sleeve forward to reveal charge port

	HIGH	LOW
LUMENS	250	50
CANDELA	1,150	250
DISTANCE	68m	31m
RUN TIME	1.5 hrs	3.5 hrs



Description	Item #
MicroStream USB - Includes lanyard - Clam - Black	66601
MicroStream USB - Includes lanyard - Box - Black	66604
MicroStream USB - Includes lanyard - Clam - Coyote	66608
MicroStream USB - Includes lanyard - Box - Coyote	66609

Size and Weight	Battery
9.83 cm; 34.1g	Lithium-ion

STYLUS®



Ultra-slim penlight with a long battery life

- Fits conveniently in your pocket
- Removable pocket clip

Description	Item #	COO	TAA
Stylus - Black - White LED	65018	US	YES

Size and Weight	Battery
15.17 cm; 31g	(3) AAAA alkaline batteries

LED Color	WHITE
LUMENS	11
CANDELA	140
DISTANCE	24m
RUN TIME	24 hrs



STYLUS PRO®



Compact, durable penlight to carry on a daily basis

- Fits easily in your pocket
- Low battery indicator - strobes when batteries are needed

LUMENS	100
CANDELA	950
DISTANCE	62m
RUN TIME	8 hrs



Description	Item #
Stylus Pro - 120V AC- Includes (2) AAA alkaline batteries - Black	66118
Size and Weight	Battery
13.4 cm; 46.9g	(2) AAA alkaline batteries

STYLUS PRO® USB // STYLUS PRO® USB UV



Rechargeable penlight, ideal for illuminating hard-to-reach spaces

- Recharges in 2.5 hours
- Powers on in "low" mode; press twice for high mode
- UV Model features a purple sleeve for easy identification

WHITE LED	HIGH	LOW
LUMENS	350	90
CANDELA	2,950	840
DISTANCE	109m	58m
RUN TIME	1.5 hrs	3.5 hrs



400NM UV LED	
OUTPUT	250mW
RUN TIME	2.5 hrs

Description	Item #
Stylus Pro USB UV - 120V AC with holster - Black	66148
Stylus Pro USB UV - Includes holster - Black	66149
Stylus Pro USB - 120V AC with holster - Black	66133
Stylus Pro USB - Includes holster - Black	66134

Size and Weight	Battery
15.1 cm; 51g	Lithium-ion

STYLUS® ACCESSORIES

DESCRIPTION	ITEM #	STYLUS	STYLUS PRO	STYLUS PRO USB
Nylon Holster	66028		✓	
Nylon Holster	66029	✓		✓
USB Power Adapter	22058			✓
101.6 cm USB Cord	22070			✓
Stylus Pro USB Battery	66143			✓
AAAA Battery Pack - 6pk	65030	✓		
Glare Guard™	65031	✓		
Rubber Sleeve - 6pk	66155			✓
Lanyard with Push-Button Slide	72024	✓		



66155



22070



66028, 66029



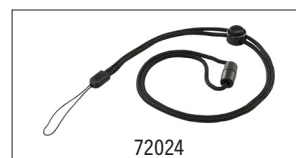
22058



66143



65031



72024

CLIPMATE® USB



Multi-function clip light for hands-free use

- Features a white LED and a 620-630nm red LED
- Built-in USB charge tab
- Recharges by plugging into USB port or optional AC wall adapter

Description	Item #
ClipMate USB	61125
ClipMate USB - 120V AC	61126
120V AC Wall Adapter	22058

Size and Weight	Battery
8.13 cm; 53.86g	Lithium polymer cell

	WHITE LED		RED LED	
	HIGH	LOW	HIGH	LOW
LUMENS	70	10	0.5	0.2
CANDELA	500	50	9	3
DISTANCE	44m	14m	6m	3m
RUN TIME	3.5 hrs	24 hrs	16 hrs	65 hrs



STREAMLIGHT JR® LED



Handheld AA battery-sized flashlight

- Doesn't take up a lot of space in the toolbox
- Push-button switch for momentary or constant on

Description	Item #
Streamlight Jr. LED - Includes (2) AA alkaline batteries and nylon holster - Black	71500
Magnetic Clip Holder	71510
Nylon Holster	71503
Rubber Helmet Strap	99075

Size and Weight	Battery
16.51 cm; 117g	(2) AA alkaline or lithium

LUMENS	225
CANDELA	2,700
DISTANCE	104m
RUN TIME Alkaline	6 hrs
RUN TIME Lithium	10 hrs



NANO LIGHT® II



Ultra-compact key chain light

- Snap hook easily attaches to key rings, zippers, etc.
- Rotating On/Off head switch
- Powered by one easy-to-find AAAA alkaline battery

LUMENS	20
CANDELA	120
DISTANCE	22m
RUN TIME	1 hr



Description	Item #
Nano Light II - Includes (1) AAAA alkaline battery - Black	73020

Size and Weight	Battery
5.7 cm; 18g	(1) AAAA alkaline

POCKET MATE®



Small but powerful hands-free light

- Ultra-compact design makes it easy to always carry with you
- Multi-function push-button switch with charge indicator
- Recharges in 4 hours

	HIGH	LOW
LUMENS	325	45
CANDELA	1,450	200
DISTANCE	76m	28m
RUN TIME	20 min	1 hr



Description	Item #
Pocket Mate - Includes Micro-USB cord - Silver	73300

Size and Weight	Battery
5.1 cm; 14.2g	Lithium polymer



NEW SLEDGE®



Low profile, multi-fuel flood headlamp

- Delivers up to 600 lumens of consistent output, with THRO® mode providing a short burst of 1,000 lumens
- Multi-function push-button switch easy to use with gloves
- 45° tilting head

	THRO	HIGH	MEDIUM	LOW
LUMENS	1,000	600	300	100
CANDELA	3,000	1,800	850	310
DISTANCE	110m	85m	58m	35m
RUN TIME	60 sec	4.25 hrs	9.25 hrs	13 hrs



Description

Sledge - Includes elastic and rubber hard hat headstrap, (1) SL-B26 battery pack and USB-C cord - Black

Item

89019

Size and Weight

4 cm; 121.9g

Battery

(1) SL-B26 battery pack

PROTAC® 2.0 HEADLAMP



Ultra-powerful, rechargeable headlamp

- Powered by our SL-B50® rechargeable battery pack
- USB-C rechargeable, inside of the light; recharges in 6 hours
- TEN-TAP® Programmable



BANDIT®



Rechargeable, ultra-lightweight, low-profile headlamp

- Large button for easy actuation
- Snap-in clip adaptor; adds additional downward adjustability
- Delivers a wide even beam with minimum shadows, perfect for close-up work

White LED	HIGH	LOW
LUMENS	180	35
RUN TIME	2 hrs	9.5 hrs

Emergency flash - 180 lumens



Green LED	HIGH	LOW
LUMENS	135	25
RUN TIME	3 hrs	13.5 hrs

Red LED	HIGH	LOW
LUMENS	45	10
RUN TIME	2.5 hrs	10 hrs

Description

Bandit - Includes USB cord - Clam - Black

Bandit - Includes USB cord - Clam - Coyote with Red LED

Bandit - Includes USB cord - Clam - Coyote with Green LED

Item

61702

61706

61707

Size and Weight

12.5 cm; 297.1g

Battery

(1) SL-B50 battery pack

Size and Weight

6.85 cm; 36.8g

Battery

Rechargeable lithium polymer



STREAMLIGHT
BRILLIANT THINKING®

Streamlight, Inc.
30 Eagleville Road
Eagleville, PA U.S.A. 19403-3996

streamlight.com // streamlightgear.com

+1 (610) 631-0800

+1 (610) 631-0712 Fax

DISTRIBUTED BY:

©2026 Streamlight, Inc. ISO 9001:2015 certified 991183 REV B 1/26 asi/89871

All rights reserved. Trademarks of companies mentioned herein appear for identification purposes only and are the property of their respective companies.